



Επιστημονικό Σωματείο,
Έτος Ίδρυσης 1982, έδρα:
Κάνιγγος 27, 106 82 Αθήνα
(Ένωση Ελλήνων Χημικών)

**ΔΙΟΙΚΗΤΙΚΟ
ΣΥΜΒΟΥΛΙΟ:**

Γ. Φακορέλλης, Ν. Ζαχαριάς,
Κ. Πολυκρέτη, Θ. Βάκουλης,
Γ. Μπασιάκος, Ε. Αλούπη, Ε.
Κυριατζή

Πληροφορίες:

Γ. Φακορέλλης ΕΚΕΦΕ
"Δημόκριτος", 153 10 Αγ.
Παρασκευή Αττικής,
Τηλ. 210-6503958-9
FAX: 210-6519430

E-mail:

yfacorellis@ims.demokritos.gr

Scientific Association, Year
of Establishment 1982,
Headquarters: Kaniggos 27,
106 82 Athens (Association
of Greek Chemists)

BOARD: Y. Facorellis, N.
Zacharias, K. Polikreti, T.
Vakoulis, I. Bassiakos, E.
Aloupi, E. Kiriati

Information: Y. Facorellis,
NCSR "Demokritos", 153
10 Ag. Paraskevi Attikis,
Greece

Tel. (+3210) 6503958-9

Fax: (+3210) 6519430

E-mail:

yfacorellis@ims.demokritos.gr

Πληροφοριακό Δελτίο της Ελληνικής Αρχαιομετρικής Εταιρείας

- Απρίλιος 2003 -

**"In peace sons bury fathers;
in war fathers bury sons." Herodotus**

Newsletter of the Hellenic Society of Archaeometry

- April 2003 -

Nr. 26

ΠΙΝΑΚΑΣ ΠΕΡΙΕΧΟΜΕΝΩΝ – TABLE OF CONTENTS

ΣΥΝΕΔΡΙΑ – CONFERENCES/WORKSHOPS

12 th International Meeting on Soil Micromorphology, September 20-26, 2004, Adana, Turkey	page 3
35 th International Symposium on Archaeometry-first circular	page 4
The evolutionary legacy of the Ice Ages	page 5
Chacmool Alluvial Geoarchaeology Session	page 9
16 th Congress of the AIHV, London, 7-13 September, 2003	page 10

ΝΕΕΣ ΕΚΔΟΣΕΙΣ – NEW PUBLICATIONS

Journal of Nordic Archaeological Science	page 18
--	----------------

ΘΕΣΕΙΣ ΕΡΓΑΣΙΑΣ/ΥΠΟΤΡΟΦΙΕΣ – JOB VACANCIES/FELLOWSHIPS

Post-doc in Gif sur Yvette laboratory, Paris	page 19
Postdoctoral Position for Research Archaeologist - Arizona State University ...	page 20
Loeb Classical Library Foundation Grants	page 21
PhD topic: Timing and Magnitude of the 8.2 KA BP Cooling event	page 22

INTERNET SITES

University of Thessaly Excavation on Kythnos, First report of results for the 2002 excavation season	page 23
--	----------------

ΑΝΑΚΟΙΝΩΣΗ - ANNOUNCEMENT

Κέντρο Έρευνας και Συντήρησης Αρχαιολογικού Υφάσματος	page 24
---	----------------

ΣΥΝΕΔΡΙΑ - CONFERENCES/WORKSHOPS

12TH INTERNATIONAL MEETING ON SOIL MICROMORPHOLOGY

September 20-26, 2004, Adana, Turkey

Dear Colleagues,

Please find below the homepage of the 12th International Meeting on Soil Micromorphology to be held in Adana, Turkey in September 20-26 2004. Best wishes for the new year.

<http://ziraat.cu.edu.tr/imm/>

Selim Kapur
Secretary of the meeting

Prof. Dr. Selim Kapur
Departments of Soil Science and Archaeometry
University of Cukurova,
Balcali, 01330, Adana -Turkey
e-mail: kapur@cu.edu.tr
tel. : +90 322 338 60 84-89 / 2220_2692
fax : +90 322 338 66 43
GSM: +0 533 644 80 30



35TH INTERNATIONAL SYMPOSIUM ON ARCHAEOLOGY-FIRST CIRCULAR

Dear colleagues,

The 35th International Symposium on Archaeometry will be held in Zaragoza (Spain) next May 2004. A first information about the meeting, as well as the preinscription form, is now available at the web site <http://www.archaeometry2004.info>

Visit it if you are interested in the meeting and send us the pre-inscription form if you wish to receive further information.

We apologize if you receive this mail more than once. Several mailing lists have been used and perhaps you are in some of them. For future information, only those sending the pre-inscription form will be notified about news and updates.

Best regards,

Josefina Pérez-Arantegui (chairperson)
Mario Vendrell (inscription and abstract handling)
ARCHAEOLOGY 2004 Zaragoza (Spain)
<http://www.archaeometry2004.info>



THE EVOLUTIONARY LEGACY OF THE ICE AGES

Dear all,

I attach below details of a Royal Society discussion meeting that I hope will be of interest to members of this listserver.

Cheers,

Keith

K.D. Bennett
Professor i kvartärgeologi, Uppsala Universitet
Geocentrum, Villavägen 16, S-752 36 Uppsala, Sweden
E-mail: Keith.Bennett@geo.uu.se
Phone: +46 18 471 2580
Fax: +46 18 55 5920

Organised by Dr Katherine Willis, Professor Keith Bennett and Professor Donald Walker FRS

Wednesday 21 and Thursday 22 May 2003

Over the past five years there have been significant advances in both genetic and palaeoecological research on the ancestry of populations. The alternation of cold and warm stages during the Ice Ages has caused repeated geographic restriction and expansion of many organisms. The conference will examine the degree to which this may have affected the evolution of the organisms involved and their relationships, particularly the mechanisms and rates of changing selective processes. It will bring together geneticists, palaeoecologists, evolutionary biologists, geologists, taxonomists, archaeologists and biogeographers to contribute to an emerging synthesis on the evolutionary significance of the Ice Ages.

Posters are invited for this Discussion Meeting. Those wishing to submit a poster should contact Suzi White on Suzi.white@royalsoc.ac.uk.

Related Activities - Life and death of the woolly mammoth - Wednesday 21 May 2003 at 6.30pm, Professor Adrian Lister of University College London will take us through the mammoth's evolution and lifestyle; its influence on human art and culture ; and the contentious arguments for why it became extinct.

The discussion meeting is free to attend, although pre-registration is essential. Those

interested in attending should register online at www.royalsoc.ac.uk/events or contact Suzi White via the email address above.

Welcome and introductory remarks by Mr Stephen Cox CVO, Executive Secretary of the Royal Society

Session 1

Evolutionary and environmental background

Chair Professor Keith Bennett

0945 Dr Katherine Willis

University of Oxford

The role of Quaternary environmental change in plant macroevolution - the exception or the rule?

1015 Discussion

1030 Tea

1100 Professor Elizabeth Vrba

Yale University, New Haven, USA

Environment and speciation: an old debate revisited and new palaeoclimatic and palaeozoological evidence

1130 Discussion

1140 Professor Godfrey Hewitt

University of East Anglia

Genetic consequences of climatic oscillations in the Quaternary

1210 Discussion

1220 Lunch

Session 2

Evidence from the plant record

Chair Professor Godfrey Hewitt

1400 Professor Joachim Kadereit

Johannes Gutenberg-Universitaet Mainz, Mainz, Germany

Spatial pattern and temporal course of Quaternary plant diversification

1430 Discussion

1440 Professor Henry Hooghiemstra

University of Amsterdam, The Netherlands

Legacy of Quaternary Ice Ages in the neotropics: shaping Andean flora and vegetation

1510 Discussion

1520 Tea

1550 Professor Martin Lascoux

Uppsala University, Uppsala, Sweden

Impact of the Ice Ages on the genetic structure of trees and shrubs

1620 Discussion

1630 Dr Gay McKinnon

University of Tasmania, Hobart, Australia

Glacial refugia and reticulate evolution: the case of the Tasmanian eucalypts

1700 Discussion

1710 Close

Thursday 22 May 2002

Session 3

Evidence from the animal record

Chair Professor Clive Gamble

0930 Professor Robert Zink

Bell Museum, University of Minnesota, USA

Tempo of avian evolution in the Pleistocene

1000 Discussion

1010 Professor Adrian Lister

University College London

Adaptive evolution in Quaternary mammals

1040 Discussion

1050 Tea

1120 Professor Alan Cooper

University of Oxford

Ancient DNA and Ice Age genetic effects on Holartic mammals

1150 Discussion

1200 Professor Russell Coope

Royal Holloway, University of London

Several million years of stability amongst insect species: in spite of
or because of Ice Age climatic instability?

1230 Discussion

1240 Lunch

Session 4

Impact of the Ice Ages on human evolution

Chair Dr Katherine Willis

1400 Dr Peter Forster

University of Cambridge

The DNA Chronology of Prehistoric human dispersals

1430 Discussion

1440 Professor Clive Gamble

University of Southampton

Changing environments and evolving human diversity in Europe and the
Near East in the Late Glacial

1510 Discussion

Concluding discussion

1520 Professor Keith Bennett

Uppsala University, Uppsala, Sweden

Continuing the debate on the role of Quaternary environmental change for
macroevolution

1550 Discussion

1600 Close



CHACMOOL ALLUVIAL GEOARCHAEOLOGY SESSION

We are organizing an alluvial geoarchaeology session for the 2003 Chacmool conference. The conference theme is Flowing Through Time: Exploring Archaeology Through Humans and Their Aquatic Environment. It will be held at the University of Calgary from November 12-16, 2003. Information about the conference can be found at <http://www.arxy.ucalgary.ca/arxy1/conferencemainpage.htm>.

The session is titled Flowing Through Time, Wading Through Muck: Turgid Topics in Alluvial Geoarchaeology . There are no chronological or geographical limitations for the session. We are hoping to include papers that address general themes as well as examples of alluvial geoarchaeology in practice. The abstract is included below.

As routes of travel and trade, as ecologically diverse environments yielding rich resources, and as culturally meaningful landscape features, rivers have had an enduring ability to attract human activity and habitation. For this reason, past and present river courses are frequently foci for high densities of archaeological sites. However, given the complex nature of alluvial environments, a complete understanding of and appreciation for the interpretive value of such sites is lacking in the absence of geoarchaeological investigations geared towards characterizing the depositional and palaeoenvironmental history of their settings. This session will provide a forum to explore and discuss the importance of geoarchaeological research in alluvial settings.

If you might be interested in participating in this session, please contact one of the organizers listed below. If you cannot participate, but know of someone who would be interested, please forward this message. Feel free to post this notice.

The deadline for abstract submission is April 15, 2003, so please respond as soon as possible.

The viability of the session will depend on the number of people interested.

Session organizers are:

Jason Gillespie, jdgilles@shaw.ca <<mailto:jdgilles@shaw.ca>>

Elizabeth Robertson, ecrobert@ucalgary.ca <<mailto:ecrobert@ucalgary.ca>>

Laura Roskowski, lroskowski@hotmail.com <<mailto:lroskowski@hotmail.com>>

16TH CONGRESS OF THE AIHV

London, 7-13 September, 2003

The 16th Congress of the Association Internationale pour l'Histoire du Verre will take place in London from Sunday September 7th 2003 to Saturday September 13th 2003.

The Programme

There will be 24 sessions of lectures arranged in two parallel sessions and two poster sessions. There will be opportunities to visit collections in London on the Wednesday and elsewhere in the south-east of England on the Saturday. The trips to visit collections in London will include opportunities to see material on display in galleries and from reserve collections. The visits to the latter will naturally have constraints both on the numbers of people who can visit and the times at which the visits can take place. As a consequence, participants will be urged to indicate which trips they are particularly interested in when they make their bookings for the conference.

The draft programmes is shown below. Additional information about the lecture and poster programme, the Wednesday visits and the Saturday trips can be found by following the links at the bottom of this page.

Sunday 7th	Evening	Opportunity to register and socialise in the Sir Alexander Fleming building
Monday 8 th	Day	Registration, Welcome, 6 Lecture sessions
	Evening	Private View at the exhibition organised by the Guild of Glass, Engravers, <i>Images in Glass</i>
Tuesday 9th	Day	6 Lecture sessions and 1 poster session.
	Evening	Reception hosted by Christie's at the Wallace Collection for the exhibition, <i>From Palace to Parlour: A Celebration of 19th-Century British Glass</i> , organised by The Glass Circle
Wednesday 10th	Day	Visits to London collections
	Evening	Free
Thursday 11th	Day	6 Lecture sessions and General Assembly of the AIHV
	Evening	Reception at The House of Commons (additional fee of GBP 10 / E 15)
Friday 12th	Day	6 Lecture sessions and 1 poster session.
	Evening	Free
Saturday	Day	Visits to centres outside London
	Evening	Reception at the Society of Antiquaries of London

Timetable for posters and lectures

	Monday	Tuesday	Thursday	Friday
9.15	Registration & Welcome	Lectures	Lectures	Lectures
10.45	<i>Tea break</i>	<i>Tea break</i>	<i>Tea break</i>	<i>Tea break</i>
11.15	Lectures	Poster Session	Lectures	Poster Session
12.45	<i>Lunch</i>	<i>Lunch</i>	<i>Lunch</i>	<i>Lunch</i>
2.15	Lectures	Lectures	Lectures	Lectures
3.45	<i>Tea break</i>	<i>Tea break</i>	<i>Tea break</i>	<i>Tea break</i>
4.15	Lectures	Lectures	General Assembly	Lectures

Draft Programme of Lectures and Posters

Please note this is a provisional programme of [lectures](#) and [posters](#) reflecting the papers that have been offered and accepted as of March 12th, 2003. The timetable for the sessions will be finalised in the summer once the people presenting the papers have confirmed that they are coming.

The Lecture Programme

Lectures will take place on Monday, Tuesday, Thursday and Friday. There will be 24 sessions arranged in two parallel sessions. Each lecture will last for a maximum of 15 minutes.

Bronze Age Glass Production

A. Shortland. *The raw materials of early glasses: the implications of new LA-ICPMS analyses.*

M. Tite, Y. Maniatis and M. Panagiotaki *Raw materials used to produce Aegean Bronze Age glass and related vitreous materials.*

M. Panagiotaki, G. Chatzi-Spiliopoulou, E. Mangou, Y. Maniatis, M. Tite . *A Bronze Age glass workshop at the Mycenaean Citadel of Tiryns, in Greece.*

C. Jackson, P. Nicholson and E. Apostolaki. *Nicholson Learning the blues: further analysis of blue Egyptian glass.*

Developments in the Second and early First Millennia

G. Nightingale. *The Mycenaean Glass Warriors.*

C. Stapleton. *Comparison of Glass from 9th century BC Hasanlu, Iran to other Early Mesopotamian and Near Eastern Glass.*

W. Reade, I. Freestone, StJ Simpson. *The Composition of Iron Age Glass from the Assyrian Capital Nimrud, in Modern Iraq.*

Th. Rehren, L. Spencer, P. Triantafyllidis. *Primary Glass Production at Hellenistic Rhodes.*

New Research on Hellenistic glass

D. Grose. *Continuity and discontinuity: the Hellenistic and Early Roman glass industries.*

- M. O’Hea. *Late Hellenistic Glass in the Levant - Civilian and Military Sites.*
R. Jackson-Tal. *Recent Discoveries of Hellenistic Glass Vessels and Objects from Israel-A Preliminary Study.*
Y. Israeli. *What was produced in the 1st century B.C. glass workshop in Ancient Jerusalem?*

Primary Production, Raw Materials and Trade in the Roman world

- M-D. Nenna, M. Picon, V. Thirion-Merle, M. Vichy. *Ateliers primaires du Wadi Natrun (Egypte): nouvelles découvertes.*
D. Ignatiadou, E. Dotsika, A. Kouras, Y. Maniatis. *Nitrum Chalestricum. The natron of Macedonia.*
M. Picon, D. Foy, M. Vichy, V. Thirion. *Verres antiques incolores: une composition particulière décolorée à l’antimoine.*
D. Foy, M. Jezegou. *Importations de Verre en Méditerranée au III siècle : la cargaison de l’épave Ouest Embiez I (sud de la France).*

Mould-blown Glass and Early Imperial Groups

- C. Lightfoot. *Anomalies among early mould-blown glass vessels.*
A. Rotloff. *Early Roman Glass Finds from the Auerberg near Schongau, Southern Germany.*
J. Price. *Glass from the fort at Hod Hill and other mid-1st century hill-top sites in southern England.*
B. Poulsen. *The Glass from the Temple of Castor and Pollux in the Forum Romanum.*

Patterns of Use of Glass in the Roman Provinces

- P. Cosyns, T. Debruyne, M. Martens. *Roman glass from the southwestern necropolis of the vicus at Tienen, Belgium.*
B. Demierre. *Le verre romain d’Erétrie, Eubée.*
F. Silvano. *Glass finds from Medinat Madi, Egypt.*
J. Poblome. *Romanized consumer behaviour in the eastern Mediterranean?*

Production and Uses of Glass in the Late Roman World

- I. Freestone, S. Wolf, M. Thirlwall. *The Production of HIMT Glass – Elemental and Isotopic Evidence.*
C. Entwistle. *Late Roman glass pendants in the British Museum.*
J. Lindblom. *Chronological and economical aspects of glass lamps from the Finnish excavations at Jabal Harûn near Petra.*
D. Keller. *Functional and social context of late Roman glass from Petra (Jordan).*

The Late Antique East

- B. Czurda-Ruth. *Glas aus Ephesos: Hanghaus I und justinianische Werkstatt auf der Agora.*
M. Negro Ponzi. *The glass typology and chronology in Mesopotamia in the Parthian and Sasanian period: a revision.*
StJ. Simpson. *Sasanian glass from Ninevah (Northern Iraq).*

The Earlier Islamic World

- M. Spaer. *The mosaic technique: its continuity in post-Roman times.*

Y. Shindo Takahashi. *The Islamic stained glass between 9th and 10th centuries.*
P. Baker. *Glass in early Islamic palaces: the new age of Solomon.*

The Thirteenth and Fourteenth centuries in the near East and Beyond

D. Whitehouse. *Glass from the Crusader Castle at Montfort.*
N. Brosh. *Late Islamic glass finds from the Jewish Quarter of the Old City, Jerusalem.*
R. Ward. *Big Mamluk Buckets.*
B. Borrell *Multicoloured glass fragments found in Singapore.*

New Light on Medieval Windows

K. Wedepohl. *Composition of Carolingian glass in Europe.*
S. Wolf, S. Trümpler and J. Goll. *Early medieval window glass from Switzerland - the technology and archaeometry of glass from Müstair (Gr) and Sous-les-Scex (Sion, Vs).*
S. Lagabrielle. *Le verre dans le vitrail : étude scientifique et technique de la collection de vitraux du musée de Cluny, Paris.*

Medieval and Later Glass Production in north-west Europe

J. Smedley, C. Jackson. *Base compositions: plant ashes, technology and choice*
C. Welch. *Archaeomagnetic Dating of Medieval and Tudor Glassmaking Sites in Staffordshire, England.*
K. Tarksay. *Renaissancezeitliches Glas aus Österreich.*
K. Mueller. *Material analyses of 13th to 17th c. decolourised glass from South German excavation sites.*

The English Market in the Late 17th Century

C. Moretti. *English lead crystal. The Ravescroft recipe and points not clear on the process of development of “flint” glass formulation.*
C. Brain. *John Greene's Glass Designs 1667-167?*
K. Tyler. *Excavations at John Baker's Vauxhall glasshouse: competing with London's late 17th century market for glass.*
D. Dungworth. *The Scientific Study of Glass Working Evidence from 17th and 18th Century Sites in England.*

Façon de Venise (1)

A. Gaba-van Dongen. *Showcase of Desire: Some social routes of Venetian-style glassware in the Netherlands during the 17th century.*
H. Willmott. *Façon de Venise glass in England. Identification, provenance and directions for future research.*
A. Mallarini. *Les maîtres d'Altare dans l'histoire du verre européen (XV^e – XVII^e siècle).*
J. Lefrancq. *L'influence anglaise sur la morphologie des verres liégeois de la 2^{ème} moitié du XVII^{ème} siècle.*

Façon de Venise (2)

G. Haggren. *Fragments from the north. Cristallo used in the Baltic region during the 16th and 17th centuries.*
C. Fontaine *La verrerie dans les anciens Pays-Bas : bilan des trouvailles archéologiques à Bruxelles (XIV^e-XVII^e s).*

I. Domenech. *Evolution and Popularisation of The Catalan Façon de Venise in the XVIIIth Century.*

Royal Patronage of Glass in the Iberian Peninsula in the 18th century

P. Pastor. *English contributions to the Royal Glass Factory of La Granja, Spain.*

M. Ferreira. *Wheel-engraved glassware from Lisbon in the 18th century.*

J. Roberts. *The Stephens brothers and the Royal Glass Factory at Marinha Grande, Portugal.*

The British Isles in the 18th-19th centuries

A. Rudebeck *Typology and dating of British and Irish cut glass styles, 1700-1840.*

A. Moran. *'On hearing it was Irish [they] said it could not be good': A week in the life of a Waterford glass travelling salesman, 27th September-3rd October 1832.*

J. Turnbull. *'Jasper Ware' produced at the Holyrood Glassworks in the mid-19th century.*

J. Malden. *Celebration in Glass.*

Contemporary glass

S. Jargstorff. *Silesian Glass Art - Past and Present.*

F. Morin. *Pate-de-Verre à basse-temperature : un revolution pour l'art statuaire.*

M. Martínez. *Museum of Glass art of Alcorcón (M.A.V.A.).*

Contemporary Glass Studies in Britain

K. Coleman. *Is there a future for teaching glass engraving in Britain?*

S. Strobl. *Gain without loss? Stained glass restoration in 2003.*

D. Klein. *British contemporary glass - the state of the art.*

Conserving glass

C. Arcak. *The conservation of archaeological glass using Silicone polymers.*

K. Eremin, B. Cobo del Arco. *Investigation of unstable 19th and 20th century Scottish glass.*

J. Caen. *The conservation of two 17th Century enameled stained glass windows by J.DE AUMONT in the Abbey 't Park in Leuven, Belgium (Flanders).*

M. Verità. *The stained windows of the Sainte Chapelle in Paris : investigations on the origin of the loss of the painted work.*

Multi-disciplinary approaches to the study of glass

J. Kunicki-Goldfinger, A. Kasprzak, J. Kierzek. *Central European crystal glass of the first half of the 18th century.*

D. Caluwé. *Glass in the Duchy of Brabant from the late middle Ages and Early Modern Times: A research project.*

U. Recker. *High Medieval Glass Production In The Central German Low Mountain Ranges.*

Glass as Ornament

S. Auth. *Mosaic glass necklaces from Ptolemaic Egypt: Gifts for deities and the deceased.*

L. Dussubieux, B. Gratuze. *Origin and provenance of Indian and south east Asian glass beads.*

A. Antonaras. *The use of glass in byzantine jewelry. The evidence from Northern Greece (6th-15th cc.).*

Let there be light and frivolity

M. Mortimer. *The chandeliers at Arbury, Nuneaton, Warwickshire.*

C. Mur de Viu. *Les commandes pour la Salle à Manger de la Reine Isabelle I: Le lustres du Salon de Colonnes du Palais Royal de Madrid.*

J-U Page, S. Koob. *A French Feast: The Corning Theater in Context.*

J. Spillman. *The Storer/Tufts Automatic Crystal Fountain.*

Fakes and Imitations

I. Biron. *Identification of false gems on objects from the Middle Ages*

S. Carboni, J. Henderson. *Toward an understanding of nineteenth-century imitations of Mamluk enameled and gilded glass.*

R. Dodsworth. *20th century Stourbridge 'imitations' of 18th century originals.*

The Poster Programme

The poster sessions will take place on Tuesday and Friday. Currently the presentations are listed in alphabetical order of the first author. Guidance notes for the preparation of posters are found [here](#).

H. Amrein, A-B. Follmann-Schulz, A. Rottloff. *Functional types of Roman glass furnaces: state of research and a lot of unsolved questions.*

I. Angelini, G. Artioli, P. Bellintani, V. Diella, A. Polla. *Protohistoric vitreous materials of Italy: from early faience to final bronze age glasses.*

I. Archibald, J. Henderson. *A site in Chester with evidence for glass making from 7th to 17th centuries.*

R. Arletti, N. Giordani, G. Sabatino, R. Tarpini, G. Vezzalini. *Archaeometrical analysis of ancient glass from western Emilia Romagna (Italy) belonging to the Imperial Age.*

M. Baxter, C. Jackson. *The statistical analysis of glass compositional data revisited.*

J. Bayley. *Roman enamel and enamelling: new finds from Castleford, Yorkshire.*

H. Cabart. *Existe-il un atelier de verriers gallo-romains à Reims à la fin du Ier siècle ?*

T. Carrera Rossell. *Pendentifs en verre sur noyau. Nouvelle contribution.*

E. Cerna, V. Hulinsky, K. Tomkova. *Early medieval glass beads from Prague castle and its surrounding- typological and chemical classification of the finds.*

G. Chatzi. *A New Unreported Use of Mycenaean Glass from Western Peloponnese, Greece.*

J-M. Coll Riera. *A fourth century assemblage of glass from the roman villa of Can Palau (Barcelona, Spain).*

H. Cool, M. Baxter. *Cups for Gentlemen.*

- P. Cosyns, F. Hanut. *Roman Black glass in Belgium.*
- P. Cosyns, E. Warmenbol, J. Bourgeois, P. Degryse. *Pre-Roman and Roman Glass Beads in Belgium.*
- A. Dawson *Glass from Spain in the British Museum.*
- P. Degryse *Evaluation of local glass manufacturing at Sagalassos (Turkey) using lead isotope techniques.*
- M. Diani. *Mobilier funéraire avec coupe en verre de la nécropole de Dorno-cascina Grande (Pavia).*
- K. Dietrich, M. Schreiner, B. Czurda-Ruth, F. Krinzing. *Scientific Investigations on Ancient Glass Findings from Ephesos – EDXRF, LA-ICP MS and REM/EDS.*
- S. Fearn. *Investigation of the Corrosion of 17th/18th Century Façon de Venise Glasses Using Advanced Surface Analysis.*
- I. Freestone, V. Tatton-Brown. *The Bonus Eventus Plaque: Changing Materials, Changing Perceptions.*
- C. Gencler. *The Glass Finds of the Necropolis of Sanctuary of Apollo Smintheus in Troad.*
- B. Gratuze, Y. Billaud. *Origin and diffusion of Bronze Age glass beads in Europe.*
- B. Gratuze, D. Foy, F. Téreygoel, J. Lancelot, J. Bayley, K. Wedepohl. *Origin and diffusion of Carolingian lead glass smoothers.*
- E. Greiner-Wronowa. *Optical interferometer as a tool for testing glass corrosion.*
- D. Hulet. *An examination of mosaic glass inlay plaques containing representative imagery.*
- T. Husband. *Window Glass from Montfort Castle.*
- D. Ignatiadou. *Colorless glass vessels from the Mausoleum at Halikarnassus.*
- K. Ikeda. *Study of core-formed glass vessels produced in the 18th dynasty.*
- A. Inoue Osumi. *British Influence on the Shinagawa Glassworks. Japan's first industrial glass factory.*
- G. Ivanov. *Archaeological glass from Kuva, Uzbekistan.*
- S. Jennings. *Glass from recent and previous excavations in the area of Whitby Abbey, North Yorkshire, England.*
- J. Jones. *Early Fourth Century Glass from a Possible Church at the Roman Port of Aila on the Red Sea.*
- M. Kos. *Painted tablets from the collection of the National museum of Slovenia - problem of provenance.*
- J. Lankton, I-S Lee, J. Allen. *Indonesian (Jatim) Glass Beads in Early Sixth Century Korean Tombs.*
- I. Lazar. *Roman Glass in Slovenia - principal forms.*

- A. McConnell. *How decanters were pressed.*
- T. Medici. *Medieval and post-medieval glass from Almada (Portugal).*
- M. Mendera, F. Fenzi, M. Galgani, E. Giannichedda, P. Guerriero, S. Lerma, B. Messiga, M. Riccardi, P. Vigato. *Archaeology of medieval and renaissance glass production in Liguria and Tuscany (Italy): characterisation and classification of production indicators. Problematic, methodology, examples.*
- C. Moretti, C. Salerno, S. Tommasi Ferroni. *The heritage of recipes exported by Venetian glass masters revealed in a manuscript written in Danzig 1645.*
- I. Nakai, A. Hokura, T. Sawada, Y. Shindo. *On-the-field analysis of chemical composition in Islamic glasses by utilizing a new portable X-ray fluorescence spectrometer at an excavation site in Egypt.*
- M. Newby. *Francesco Sibilio and the Re-Use of Ancient Roman Glass in the 19th Century*
- R. Pollak. *Imported Luxury Glass Vessels at Ramla in the Early Islamic Period*
- Salome. *Pate-de-Verre a Terre Perdu: un autre revolution pour l'art statuaire*
- A. Venini de Santillana. *Lighting with glass from the Venetian Chandelier to contemporary installations*
- H. Sedláčková. *Typology of imported medieval glass in Brno, Czech Republic.*
- T. Sode. *Trade with broken glass and cullet in ancient time.*
- W. Stern. *Wood Ash vs glass composition.*
- J. Stratis, E. Mirtsou, D. Ignatiadou. *Chemical Analysis of Late Classical and Early Hellenistic colorless glass from Macedonia, Greece.*
- F. Tartari. *Decouverte de verre dans un 'villa romana' en Asparagium.*
- A. Tek. *Glass Bowls and other Vessels with Cut Facet Decorations from Arycanda in Lycia.*
- P. Triantafyllidis. *Late Hellenistic Hot-formed Glass Bowls from Rhodes: the Local Production.*
- K. Wight. *The Image of Fortuna on Mythological Beakers.*
- H. Wouters. *Mirror glass from archaeological excavations in Flanders and Brabant.*
- M. Wypyski, L. Pilosi. *Preliminary Compositional Study of Glass from Montfort Castle.*
- S. Zecchin, M. Verità. *The origin of Venetian glassmaking through scientific investigation.*
- Ziviello, C., Arveiller-Dulong, V. *Quelques verres taillés ou gravés des collections du Musée Archéologique National de Naples.*

For more information please visit the site: <http://www.historyofglass.org.uk/>

ΝΕΕΣ ΕΚΔΟΣΕΙΣ – NEW PUBLICATIONS

**JOURNAL OF NORDIC
ARCHAEOLOGICAL SCIENCE**

Dear colleagues,

The journal JONAS (Journal of Nordic Archaeological Science) publishes papers within the field of archaeological science, with an emphasis on the Nordic-Baltic region. The aim is to solve archaeological problems through the integration of a wide range of scientific and technical methods, e.g. soil chemistry, bone chemistry/DNA, palaeopathology, archaeobotany, diet, metallurgy, textiles, analyses of the structure of various materials, prospecting, preservation of objects etc. The journal is addressed to archaeologists in general and any scientist working in an interdisciplinary context with an archaeological connection or interest. By placing this emphasis on problem solving and integration we hope to fill a gap between journals on general archaeology and those devoted exclusively to archaeological science. All articles are peer reviewed by distinguished scientists.

Submit your papers to JONAS

Notes for Authors are found on the JONAS homepage,
<http://www.archaeology.su.se/arklab/jonas/authinfo.html>

Subscribe to JONAS

JONAS is published yearly, and the subscription fee is 125 SEK (c. 14 EUR/USD), excluding postage and packing. Students are offered a reduced subscription fee of 50 SEK (<6 EUR/USD). Order and subscription details can be found on the JONAS homepage, <http://www.archaeology.su.se/arklab/jonas/subscribe.html>

TIME-LIMITED OFFER - free access to JONAS 13

The full text of the papers published in JONAS 13 will be freely available during March 2003 as pdf files readable in Adobe Acrobat. Go to <http://www.archaeology.su.se/arklab/jonas/current.html> to access the papers (NB! Valid only for 1-31 March).

JONAS Editorial Board
Journal of Nordic Archaeological Science
AFL, Greens villa, SU
S-106 91 Stockholm
Sweden
fax +46 8 674 73 66
jonas@arklab.su.se
<http://www.archaeology.su.se/arklab/jonas/>

ΘΕΣΕΙΣ ΕΡΓΑΣΙΑΣ/ΥΠΟΤΡΟΦΙΕΣ –
JOB VACANCIES/FELLOWSHIPS

POST-DOC IN GIF SUR YVETTE
LABORATORY, PARIS

Dear Colleagues,

The Gif sur Yvette laboratory (near Paris) is looking for a young scientist who might be interested by a post-doctoral position in luminescence dating.

For details, contact Norbert Mercier (Norbert.Mercier@lsce.cnrs-gif.fr) or directly, Martine Paterne, head of the Geochronology & Geochemistry group : paterne@lsce.cnrs-gif.fr

Best wishes,

The G&G group.

POSTDOCTORAL POSITION FOR RESEARCH ARCHAEOLOGIST - ARIZONA STATE UNIVERSITY

We announce a Postdoctoral position in archaeology at the Archaeological Research Institute, Arizona State University (ARI website: <http://archaeology.asu.edu>). Ph.D. in Archaeology required. Desired: interest/experience in interdisciplinary studies and conducting research on archaeological issues of central Arizona; Interdisciplinary research experience or educational training relevant to modeling, hydrology, materials analysis, information management, or human/environmental impacts.

The postdoctoral associate will work with and contribute to an ongoing interdisciplinary effort to understand the long-term prehistoric development of the Salt/Gila Basin.

Position begins 8/15/2003.

Send cover letter explaining interest in position and relevant expertise; a curriculum vitae; names, addresses, phone numbers and email addresses of 3 references; and reprints of relevant publications (limit of 3) to:

Dr. Arleyn Simon,
Post-Doc Search, Archaeological Research Institute,
Dept of Anthropology,
PO Box 872402, Arizona State University,
Tempe, AZ 85287-2402.

Application deadline is 5/30/03; if not filled the 15th and 30th of each month thereafter until search closed.

For inquiries, contact Dr. Arleyn Simon at 480-965-9231 or arleyn.simon@asu.edu.
Position contingent upon funding. AA/EOE.

LOEB CLASSICAL LIBRARY **FOUNDATION GRANTS**

Announcing Loeb Classical Library Foundation Grants

The Loeb Classical Library Foundation will award grants to qualified scholars to support research, publication, and other projects in the area of classical studies during the academic year 2003-2004. Grants will normally range from \$1,000 to \$30,000, and may occasionally exceed that limit in the case of unusually interesting and promising projects. From time to time a much larger grant may be available, as funding permits, to support a major project. Applicants must have faculty or faculty emeritus status at the time of application.

Grants may be used for a wide variety of purposes. Examples include publication of research, enhancement of sabbaticals, travel to libraries or collections, dramatic productions, excavation expenses, or cost of research materials. Individual grant requests may be only partially funded. In exceptional circumstances a grant may be extended or renewed.

A special selection committee will choose the persons to whom grants are to be awarded and recommend the amount of the grants. James Loeb directed in his will that income from the Loeb Classical Library beyond that needed for the maintenance and enhancement of the Library eventually should be used "for the encouragement of special research at home and abroad in the province of Archaeology and of Greek and Latin Literature" and that awards should be granted "without distinction as to sex, race, nationality, color or creed."

Application forms, with detailed instructions for applying, will be available on request, after April 15, 2002, at:

Loeb Classical Library Foundation
c/o Department of the Classics
Harvard University
204 Boylston Hall
Cambridge, MA 02138
Phone: (617) 384-8052
Fax: (617) 496-6720

URL: <http://www.fas.harvard.edu/~lclf/>

PHD TOPIC: TIMING AND MAGNITUDE OF THE 8.2 KA BP COOLING EVENT

Please bring the following advert to the attention of potential PhD candidates.

We are seeking applications for the following PhD topic at the Palaeoecology Centre, School of Archaeology and Palaeoecology, Queens University Belfast, to commence October 2003:

TIMING AND MAGNITUDE OF THE 8.2 KA BP COOLING EVENT

Full details of the project can be obtained from Dr Nicki Whitehouse (n.whitehouse@qub.ac.uk). Visit our web site (<http://www.qub.ac.uk/arcpal>) for information on the School. The successful candidate will hold, or expect to obtain, a primary degree in Geography, Palaeoecology, Biology, Archaeology at 2i or higher, or an equivalent qualification. A relevant Masters (M.Sc.) will be looked upon favourably. Ideally the successful candidate should have experience of looking at fossil insect remains.

Funding will be dependant on the quality of applicant and is competitive with other projects within the School. If funded, UK nationals will receive a maintenance grant and fees; EU candidates would receive fees only. Non EU candidates are encouraged to apply as we have some awards for international students.

Candidates should contact Dr Nicki Whitehouse by the 1st April 2003 for further details and application procedures.

Many thanks,

Nicki Whitehouse

Dr. Nicki J. Whitehouse
School of Archaeology and Palaeoecology
Queens University of Belfast
Malone Road
Belfast BT7 1NN

Tel. 028 90273978.

Fax number: 028 90335354

Mobile: 07813 076464

Email: N.Whitehouse@qub.ac.uk

INTERNET SITES

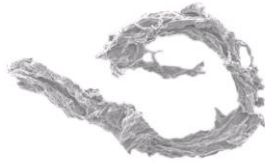
UNIVERSITY OF THESSALY **EXCAVATION ON KYTHNOS**

First report of results for the 2002 excavation season

Please visit the site <http://www.ha.uth.gr/gr/department/07.html> if you want to read the first report of results for the 2002 excavation season concerning the University of Thessaly Excavation on Kythnos.

ΑΝΑΚΟΙΝΩΣΗ - ANNOUNCEMENT

ΚΕΝΤΡΟ ΕΡΕΥΝΑΣ ΚΑΙ ΣΥΝΤΗΡΗΣΗΣ ΑΡΧΑΙΟΛΟΓΙΚΟΥ ΥΦΑΣΜΑΤΟΣ



Κέντρο Έρευνας
& Συντήρησης
Αρχαιολογικού
Υφάσματος

Τα αρχαιολογικά υφάσματα ως αντικείμενα του υλικού πολιτισμού υπόκεινται στους περιορισμούς της ύλης και των τεχνικών της μεταποίησής της και διέπονται από τις γενικές δεσμεύσεις της διαπλοκής, της αντοχής, του χρωματισμού. Όμως η κατανόηση και η εκμετάλλευση των ιδιοτήτων των πρώτων υλών, η εφεύρεση των τεχνικών αξιοποίησής τους μαζί με τις ανάγκες που καλύπτουν τα υφάσματα και τους συμβολισμούς που αυτά ενσαρκώνουν, αποτελούν στοιχεία που χαρακτηρίζουν κοινωνίες και ιστορικές εποχές. Τα υφάσματα σηματοδοτούν με τη μορφή, την παρουσία ή την απουσία τους πολιτισμούς και στάσεις ζωής.

Το Νοέμβριο του 2002 ιδρύθηκε το *Κέντρο Έρευνας και Συντήρησης Αρχαιολογικού Υφάσματος* με σκοπό ακριβώς τη μελέτη και τη συντήρηση κάθε είδους υφάσματος, και κάθε είδους αρχαιολογικού καταλοίπου που σχετίζεται με τη διαδικασία της παραγωγής τους (υφάνσιμες ύλες, κλωστές ή εργαλεία).

Ενας από τους στόχους του Κέντρου είναι η παρακολούθηση της έρευνας γύρω από τα υφάσματα. Σε παγκόσμιο επίπεδο τελευταία γίνονται προσπάθειες για την κατανόηση της ιδιαιτερότητας της μορφής και της παρουσίας των υφασμάτων σε κάθε πολιτισμό, σε διάφορες όψεις της ζωής, στη μοναδική ιστορικότητά τους.

Σήμερα, για τη μελέτη ενός υφάσματος χρησιμοποιούνται ως πεδία αναφοράς οι τεχνικές και οι γνώσεις που έχουν διεθνώς αναπτυχθεί. Η εφαρμογή αυτών των μεθόδων στο Αιγαιακό πλαίσιο είναι ήδη δύσκολη και απαιτεί εξειδικευμένες γνώσεις. Κυρίως, διότι το περιβάλλον διατήρησης είναι διαφορετικό από το υγρό περιβάλλον του Βορρά, όπου έχουν γίνει και οι περισσότερες ειδικές μελέτες. Στο Νότο, στις Μεσογειακές περιοχές, η διατήρηση των υφασμάτων οφείλεται σε πιο σύνθετους λόγους. Γι' αυτό η μελέτη των συνθηκών διατήρησης και των τεχνικών συντήρησης δεν έχει προχωρήσει όσο στην κεντρική και βόρεια Ευρώπη. Ούτε έχουν διασαφηνιστεί οι τεχνικές ιδιαιτερότητες τους. Ως τόσο όλα αυτά είναι η απαραίτητη βάση για το επόμενο βήμα, για την πολιτισμική εκτίμηση των ειδικών μορφών που λαμβάνουν αυτά τα έργα της Αθηνάς : από το σπάραγμα στην ανασύσταση ολόκληρου του τεμαχίου του υφάσματος, της υφαντικής τεχνολογίας, της διακόσμησης, του χρώματος και των αξιών του, δηλαδή της αισθητικής μιας περιόδου. Επακολουθεί η αποκατάσταση του τρόπου ένδυσης, δηλαδή της σχέσης του υφάσματος με το σώμα που αποτελεί διαμεσολάβηση με τον έξω κόσμο, κατασκευή της κοινωνικής εικόνας.

Επομένως, συνοπτικά, οι στόχοι του Κέντρου είναι οι εξής :

1. Ο πρώτιστος στόχος είναι να **τεθεί** το αντικείμενο -διότι αυτό δεν έχει πλήρως γίνει- μέσω κυρίως της συγκέντρωσης των ευρημάτων. Η σύνταξη του corpus των υφασμάτων που βρέθηκαν στον αιγαιακό χώρο, δηλαδή μία καταγραφή, βιβλιογραφική και μουσειακή είναι απαραίτητη. Από την καταγραφή θα αναδειχθεί η εξέλιξη, η ιστορία, θα προκύψουν οι ιδιαιτερότητες των ελληνικών υφασμάτων, οι ομοιότητες και οι διαφορές τους.

2. Παράλληλα, εξ ίσου σημαντικές είναι οι μελέτες για τις μεθόδους συντήρησης των αρχαιολογικών υφασμάτων, δεδομένου ότι η συντήρηση είναι μία προνομιακή στιγμή για τη μελέτη. Δίδεται δε ιδιαίτερη έμφαση στην έρευνα μη καταστρεπτικών μεθόδων. Το Κέντρο μπορεί να παρέχει συμβουλευτικές υπηρεσίες για σωστικές επεμβάσεις ως προς τα αρχαιολογικά υφάσματα που με διάφορες μορφές αποκαλύπτονται κατά τις ανασκαφές. Το ίδιο μπορεί να πράξει και για τα αρχαιολογικά υφάσματα που βρίσκονται αποθηκευμένα σε μουσειακούς χώρους ή συλλογές.

3. Η μελέτη προϋποθέτει το κατάλληλο γλωσσικό εργαλείο. Η επεξεργασία ενός λεξιλογίου των υφαντικών όρων με τις επεξηγήσεις τους αποτελεί μία άμεση ανάγκη που εντάσσεται στις προτεραιότητες του Κέντρου.

4. Σημαντικός στόχος του Κέντρου είναι η υποστήριξη επιστημονικών, εκπαιδευτικών, επιμορφωτικών, πολιτισμικών ή άλλων αναλόγων δραστηριοτήτων. Κυρίως, θα επιδιώκεται μία σωστή ενημέρωση. Προς τον σκοπό αυτόν ετοιμάζεται η έκδοση ενός εξαμηνιαίου ενημερωτικού δελτίου για την έρευνα των αρχαιολογικών υφασμάτων στην Ελλάδα.

Τέλος, ας υπογραμμίσουμε το εξής : το γεγονός ότι τα ίχνη ή τα σπαράγματα των υφασμάτων που βρέθηκαν στο Αιγαίο έχουν λίγο μελετηθεί δεν σημαίνει ότι δεν υπάρχουν. Και να τονίσουμε ότι ο πλούτος των πληροφοριών που παρέχουν κάνουν την προσέγγιση – ιδίως όταν είναι διεπιστημονική-ιδιαίτερα αποδοτική.

Τρις Τζαχίλη
Γιούλη Σπαντιδάκη
Ελίζα Πολυχρονιάδου

Κέντρο Έρευνας και Συντήρησης Αρχαιολογικού Υφάσματος
Κουμανούδη 26
11474 Αθήνα
τηλ. 2106431112
e-mail artex@hol.gr
