



Επιστημονικό Σωματείο,
Έτος Ίδρυσης 1982, έδρα:
Κάνιγγος 27, 106 82 Αθήνα
(Ένωση Ελλήνων Χημικών)

**ΔΙΟΙΚΗΤΙΚΟ
ΣΥΜΒΟΥΛΙΟ:**

Γ. Φακορέλλης, Ν. Ζαχαριάς,
Κ. Πολυκρέτη, Θ. Βάκουλης,
Γ. Μπασιάκος, Ε. Αλούπη, Ε.
Κυριατζή

Πληροφορίες:

Γ. Φακορέλλης ΕΚΕΦΕ
"Δημόκριτος", 153 10 Αγ.
Παρασκευή Αττικής,
Τηλ. 210-6503326
FAX: 210-6519430

E-mail:

yfacorellis@ims.demokritos.gr

Scientific Association, Year
of Establishment 1982,
Headquarters: Kaniggos 27,
106 82 Athens (Association
of Greek Chemists)

BOARD: Y. Facorellis, N.
Zacharias, K. Polikreti, T.
Vakoulis, I. Bassiakos, E.
Aloupi, E. Kiriati

Information: Y. Facorellis,
NCSR "Demokritos", 153
10 Ag. Paraskevi Attikis,
Greece

Tel. (+30 210) 6503326

Fax: (+30 210) 6519430

E-mail:

yfacorellis@ims.demokritos.gr

Πληροφοριακό Δελτίο της Ελληνικής Αρχαιομετρικής Εταιρείας

- Φεβρουάριος 2004 -

Newsletter of the Hellenic Society of Archaeometry

- February 2004 -

Nr. 36

ΠΙΝΑΚΑΣ ΠΕΡΙΕΧΟΜΕΝΩΝ – TABLE OF CONTENTS

ΣΥΝΕΔΡΙΑ – CONFERENCES/WORKSHOPS

18 th Annual Ceramic Ecology Symposium, American Anthropological Association, San Francisco, 17-21 November 2004	page 4
Workshop - Archaeometry with IBA and related methods, 9-10 June 2004, Ljubljana, Slovenia	page 7
International conference - DIMENSION STONE 2004 - New perspectives for a traditional building material, 14-17 June 2004, Prague, Czech Republic, Second circular and <u>final call for papers</u>	page 10
Autour de la cuisine, Clermont-Ferrand, France, 22-24 April	page 14
ARCHAEOLOGICAL SCIENCE OF THE AMERICAS	page 17
ESRM conference and Careers Workshop in Lisbon	page 19
Global Perspectives on the Archaeology of Islands, 8-11 December 2004, University of Auckland, New Zealand	page 20
Prehistoric Ceramics Research Group and the Prehistoric Society joint Conference, 22 nd - 24 th October 2004, University of Bradford, First Call for Papers	page 21
The Diniacopoulos Family and Collection Greek and Roman Antiquities - An International Conference, February 4-5, 2004 Montreal (Quebec)	page 22
10 th PIXE2004, Portoroz, Slovenia, June 4 - 8, 2004	page 24
Summer school course on metals technology, microstructure and corrosion, UCLA, July 5 th -16 th 2004	page 25
<u>ΘΕΣΕΙΣ ΕΡΓΑΣΙΑΣ/ΥΠΟΤΡΟΦΙΕΣ – JOB VACANCIES/FELLOWSHIPS</u>	
NYMM position in Egyptology	page 26
Aegean prehistory position in Oxford University	page 27
<u>ΝΕΕΣ ΕΚΔΟΣΕΙΣ – NEW PUBLICATIONS</u>	
Papers from the Institute of Archaeology - Publication of Volume 14 (2003) ...	page 28
<u>ΑΝΑΚΟΙΝΩΣΕΙΣ – ANNOUNCEMENTS</u>	
Ventris Memorial Award	page 30

Call for Papers--Current Research in the Pleistocene, Volume 21, 2004 **page 31**

Announcing a new list ETANA-Abzu-news **page 36**

INTERNET SITES

London and Paris markets flooded with looted Iranian antiquities **page 38**



ΣΥΝΕΔΡΙΑ - CONFERENCES/WORKSHOPS

18TH ANNUAL CERAMIC ECOLOGY SYMPOSIUM

**American Anthropological Association
San Francisco, 17-21 November 2004**

Dear Colleagues:

It is time to plan for the **18th Annual Ceramic Ecology Symposium (2004)**. The symposium will be submitted as a volunteered session to the program committee for the annual meeting of the American Anthropological Association to be held in San Francisco during the period 17-21 November 2004. The abstract of the 2004 session proposal is appended below.

Dr. Tom Myers (University of Nebraska) has graciously agreed to be the discussant this year.

Confirmed participants include: Tom Myers (discussant); Charles C. Kolb (introduction), Chris Pool, Marilyn Beaudry Corbett and Rosemary Joyce, Frances Ahern, Louana Lackey, Sandra L. Lopez Varela, Kostalena Michelaki, Dean Arnold, and Olivier Gosselain.

Remember that the AAA submissions and payments of fees are now totally electronic. However, the instructions are not yet available on the AAA website. Please do not submit a paper to the session on your own, I'll provide explicit instructions to the ten lucky participants once AAA has posted them and I have inserted the session abstract.

SESSION ABSTRACT (not in AAA format):

CERAMIC ECOLOGY XVIII: CURRENT RESEARCH ON CERAMICS 2004

Eighteenth Annual Ceramic Ecology Symposium

American Anthropological Association Annual Meeting

San Francisco, California

17-21 November 2004

Symposium Co-organizers:

CHARLES C. KOLB (National Endowment for the Humanities) and

LOUANA M. LACKEY (Maryland Institute College of Art)

Chairman:

CHARLES C. KOLB

Symposium Discussant:

THOMAS MYERS (University of Nebraska State Museum)

SYMPOSIUM ABSTRACT

The papers in this international and interdisciplinary symposium, the 18th in the annual series, reflect a number of approaches within the framework of Matson's concept of Ceramic Ecology, set forth in his volume, **Ceramics and Man** (1965). In this work Matson a ceramic engineer, archeometrician, ceramic ethnoarchaeologist, and ethnographer stated that "unless ceramic studies lead to a better understanding of the cultural context in which ceramic materials were made and used, they form a sterile record of limited worth." Ceramic Ecology as a methodological and theoretical approach has as its paramount goal a better understanding of the peoples who made and used pottery and seeks to redefine our comprehension about the significance of these materials in human societies. The concept of Ceramic Ecology is contextual, multi and interdisciplinary, and analytical. On the one hand, it seeks to evaluate data derived from the application of physiochemical methods and techniques borrowed from the physical sciences within an ecological and sociocultural frame of reference. It relates environmental parameters, raw materials, technological choices and abilities, and sociocultural variables to the manufacture, distribution, and use of pottery and other ceramic artifacts. On the other hand, interpretation of these data and explanations of the ceramic materials utilize methods and paradigms derived from the social sciences, humanities, and the arts. The concept of Ceramic Ecology forms an implicit or explicit basis of the investigations reported by archaeologists, ethnographers, and others in this symposium in which emphasis is placed upon the technological and socioeconomic aspects of ceramic materials regardless of chronology or geography. It also demonstrates the value of the cross fertilization which results when investigators ranging from art historians and professional potters to ethnoarchaeologists and archaeometricians come together in a forum devoted to a topical consideration: ceramics. These papers continue a symposium series initiated at the 1986 AAA meeting by students of ceramic materials who are members of the informal "Ceramic Studies Interest Group," an organization formed at the suggestion of Matson.

Charles C. Kolb

National Endowment for the Humanities

Room 411

1100 Pennsylvania Avenue, NW

Washington, DC 20506

BEST COMMUNICATION:

ALL HARDCOPY MAIL: 1005 Pruitt Court SW, Vienna, Virginia 22180-6429 USA

E-mail: ckolb@neh.gov

DIRECT: 202/606-8250



WORKSHOP - ARCHAEOLOGY WITH IBA AND RELATED METHODS

9-10 June 2004, Ljubljana, Slovenia

Date and place

The workshop is a satellite meeting to the PIXE2004 conference in Portorož, and will take place from Wednesday, 9 June, to Thursday, 10 June 2004. The meeting place will be Ljubljana, the capital of Slovenia, located about 120 km from the seaside.

Organization

The workshop will be organized under the auspices of the European action COST-G8 “Non-destructive analysis and testing of museum objects”. The local organizers will be University of Ljubljana (Faculty of mathematics and physics, Department of Physics), Institute Jožef Stefan, National gallery and National Museum of Slovenia.

Preliminary program

Wednesday, 9th June:

- Session “Impact on natural sciences on archaeology and history of art”
- Popular lecture:
 G. Demortier, The construction of the Cheops pyramid: an enigma solved?

Thursday, 10th June:

- Session “Applications of IBA and related methods to specific archaeological materials”
- Round table discussion:
 New applications of IBA and related methods in archaeometry

List of speakers yet confirming participation:

- A. Giunlia-Mair: Archaeometallurgy
- G. Demortier: Ion Beam techniques for the non-destructive study of ancient gold artifacts;
- P.A. Mando: Differential PIXE techniques for investigation of the layer structure of Renaissance paintings;
- A. Denker: Influence of corrosion layers on quantitative analysis;
- M. Griesser, A. Denker, J. Opitz-Coutureau, C. Couzon, R. Denk, H. Winter: Non-destructive investigation of the composition of leached out “Wiener Pfennige” by high energy PIXE;
- B. Constantinescu: Romanian gold archaeological studies using microPIXE;
- A. Climent-Font: Applications to archaeometry of the new 5 MV accelerator facility in Madrid;

- D. Jemrich-Simbürger, C. Neelmeijer, M. Mäder, M. Schreiner: IBA of iridescent Art Nouveau glass manufactured by Tiffany and Loetz – investigations concerning the technology;
- B. Gratuze: Recent investigation of glass, lithic materials and precious materials using LA-ICP-MS and activation analysis;
- M. Dowsett: The use of ultra low energy dynamic SIMS in the study of the early stages of tarnishing on metals;
- Ž. Šmit, P. Pelicon, J. Simčič, J. Istenič: Metal analysis with PIXE: the case of Roman military equipment;
- J. Istenič: Archaeometric research of Roman pottery in Slovenia.

Social and visiting program

A concluding reception will be organized on June 10th.

A guided tour will take place through Ljubljana and its cultural points of interest on Friday, 11th June.

For those staying in Ljubljana, an excursion to historically interesting resorts will be organized on Saturday, 12th June.

Call for contributions

The participants willing to attend the workshop are kindly invited to send an application to the organizers. The application should include the **basic data of the applicant** (name and address), the **title of the contribution**, and optionally, which of the two main topics is selected. The applications have to be submitted electronically, to the address smit@fiz.uni-lj.si.

Application dead-time: February 6, 2004

Transportation and lodging

For the contributors that will attend the PIXE2004 conference before, the transportation from Portorož to Ljubljana will be organized as part of the planned excursion to the Institute Jožef Stefan after the end of the PIXE2004 conference. Upon leaving, the Ljubljana airport or railway station is quite easy to be accessed from the city center.

The participants will be accommodated in a hotel of B category in the city center. The prize of a single room is about 85 EUR/night. The organizer will execute hotel booking after receiving the application for the workshop.

Important : Please specify the number of nights you would like to stay in Ljubljana.

These information is required also from those who have already announced their intention of participation. We need it to execute the hotel booking in time.

Place of event

The workshop will be held in the National gallery of Slovenia that is within walking distance from the hotel.

Presentation

The participants are encouraged to present their contribution in an oral form. The presentation time is 20 minutes + 5 minutes discussion. The lecture room is equipped

with slide, overhead and computer-based presentation facilities. The contributors may also present their work in the form of posters.

Proceedings

The proceedings of the workshop will be published as an independent volume of Nucl. Instr. Meth. Sect. B. The authors are invited to prepare their manuscript in the size of 6 printed pages. The deadline for sending the manuscripts is after the conference, but not later than July 31, 2004. The manuscripts will be subject to a strict refereeing procedure.

Current information and correspondence

In case of any questions, please refer to:

Prof. Žiga Šmit
Faculty of mathematics and Physics
Jadranska 19
SI-1000 Ljubljana, Slovenia
tel.: +386 1 4766 589
fax.: +386 1 2517 281
e-mail: smit@fiz.uni-lj.si

Looking forward for meeting you at the archaeometry workshop in Ljubljana,

Žiga Šmit
Workshop chairman

Ljubljana, January 19, 2004

INTERNATIONAL CONFERENCE - DIMENSION STONE 2004 - NEW PERSPECTIVES FOR A TRADITIONAL BUILDING MATERIAL

14-17 June 2004, Prague, Czech Republic

Second circular and final call for papers

Organized by

Institute of Geochemistry, Mineralogy and Mineral Resources
Faculty of Science, Charles University in Prague

and co-organized by

Academy of Fine Arts in Prague

Czech national group of the International Society for Rock Mechanics (ISRM)

Czech national group of the International Association for Engineering Geology and the Environment (IAEG)

Society for Geology Applied to Mineral Deposits (SGA)

Invitation

*The Institute of Geochemistry, Mineralogy and Mineral Resources (Faculty of Science, Charles University in Prague) together with the co-organising subjects: Academy of Fine Arts in Prague, Czech national group of the International Society for Rock Mechanics (ISRM), Czech national group of the International Association for Engineering Geology and the Environment (IAEG), and Society for Geology Applied to Mineral Deposits (SGA), welcome you to attend the **DIMENSION STONE 2004**, a forum for scientists, designers and architects working with natural stone.*

Background and objectives

Dimension stone is one of the few durable building materials that fulfil criteria of sustainable utilisation of natural resources. It has drawn attention from times unmemorable and played a significant role in all human activities. The dimension stone evaluation developed to the real scientific discipline during the 20th century. At the beginning of the 21st century, the demand for dimension stone is still growing although it must compete with other – artificial – building materials. Many countries face massive imports although local historical stone resources are still available and can be employed in a traditional manner.

*The **DIMENSION STONE 2004** conference will deal with all subjects related to the scientific study of dimension stones. One of the main aims of this event is to bring together people working in different aspects of natural stone, including production and development as well as design and education. The **DIMENSION STONE 2004** conference offers an opportunity to present scientific results, and exchange views on research of natural stone.*

Scientific themes

The main conference topics will be:

Geological research and development

- traditional and new methods of prospecting for new deposits
- quarry assessment and planning
- geological methods applied for the study of natural stones

Dimension stone databases

- dimension stone databases
- GIS applications
- historical dimension stone resources
- ancient stone tracing

Rock mechanics and geotechnics applied to dimension stone research

- field methods and correct design of quarries
- laboratory geomechanical methods applied to dimension stone research
- stone workability and unconventional stone testing
- quarrying methods in specific areas (e.g. mountainous landscape)

Environmental research and development

- impact of natural stone production to the natural systems and landscape
- efficient use of available products and by-products
- environmental legislation and stone quarrying
- environmental value of abandoned quarry areas

Technical research and development

- methods and assessment of technical quality
- development of production technology
- standardization of methods
- research of stone construction

Deterioration and restoration

- processes of natural and man-induced weathering of building stones
- stone conservation strategies
- weathering and conservation case studies

Design and products innovation

- architecture – recent and future applications
- industrial design
- sculptural stones

Conference papers format, submission and publication

The conference Proceedings will be published by A.A.Balkema as a hardbound conference volume available to the participants at the beginning of the conference. The length of manuscripts should not exceed 6 pages prepared according to the template available in the attached file (DIMSTONEProc.doc see also instructions.pdf) or available from: <http://www.natur.ccuni.cz/ugmnz/dimensionstone2004>. Only the submissions via e-mail or floppy disc will be accepted.

Manuscripts should be submitted to contact address as soon as possible, but no later than February 25, 2004. Please indicate your preference for an oral or a poster presentation. Indicate author who will present the paper. Authors will be notified on the manuscript receipt only electronically. For this reason be sure to include your contact e-mail address.

Scientific committee of the conference will examine the manuscripts and divide the papers into oral and poster contributions depending on the general interest and impact of the contribution. There will be time allocated to poster session to ensure detailed discussion of presented posters. Authors will be notified of the Committee decision by March 31, 2004.

Please note that each author has to fill and send back the Consent to Publish-form to the editor (R. Příklad). The form can be found in the attached file (Consent form books.doc) or downloaded from:

<http://www.natur.ccuni.cz/ugmz/dimensionstone2004>. Please fill the title of your contribution and its author(s) to the relevant lines of the document.

Registration costs

Full registration fee of **200 EUR** (250 EUR for payment proceeded after May 15, 2004) will cover the cost of attendance, conference proceedings, refreshment at coffee breaks, and conference dinner. The reduced fee for ISRM, IAEG and SGA members will be 150 EUR (200 EUR for payment proceeded after May 15, 2004).

Student registration fee of **50 EUR** (70 EUR for payment proceeded after May 15, 2004) covers the same. Note that certificate confirming full time studentship of participant is required.

Accompanying person registration fee of **100 EUR** (130 EUR for payment proceeded after May 15, 2004) includes attendance to the conference and participation to all social events, but does not include stationery and book of abstracts.

Participants will pay for the accommodation separately. The hotel costs range from 30 to 100 EUR/night. The room price ordinary includes breakfast at all hotels. The list of recommended hotels will be provided later.

PAYMENT DETAILS

The conference fee can be paid in EUR by bank transfer, cheque/eurocheque, or internationally accepted credit card (only VISA, MasterCard, and JCB are possible), free of bank charges to the recipient, at the following bank account:

Bank account: 38533021/0100

SWIFT: KOMBCZPP

Variable symbol: 90-903160, with the reference: "DIMENSION STONE 2004" and the surname of the sender

Bank: Komerční banka, a.s., Václavské nám. 42, Praha 1, Czech Republic

For the credit card payment be sure to include:

Card Number:

Card Holder Name:

Expiry Date:

Card Security Code:

Symposium venue and organization

The conference will take place in Prague (Czech Republic), the capital of the Czech Republic. This city faces more than 1000 years of history in which dimension stone played important role. Since Middle Ages, Prague is being ranked among the most beautiful town on the World. Prague represents the unique complex of the historical monuments of all artistic styles and directions. Since 1992 the historical centre of Prague has been enrolled into "The register of the world cultural and natural heritage" of UNESCO.

Further information and accommodation

Please contact conference organizer regarding your special requirements. Information on travel, accommodation, and final program will be given in the 3rd circular.

Important dates

The dates of the conference are June 14-17, 2004. The field trip will be lead to significant monuments in Prague and its environments. Details about the field trips, summer school schedule, and excursion costs will be announced later.

Full paper submission	February 25, 2004
3 rd circular	March 31, 2004
Notification to the authors on final acceptance	March 31, 2004
Early payment	May 15, 2004
Conference	June 14-17, 2004

Symposium language

The language of the symposium will be English and will be used in all printed material and presentations. There will be no simultaneous translation.

Further information

Additional information (transport, accommodation, etc.) will be provided in the third circular and will also appear on the dimension stone pages:
<http://www.natur.ccuni.cz/ugmnz/dimensionstone2004>

Please address all correspondence to the conference organiser:

Assoc. Prof. Richard Příkryl, Ph.D.
(DIMENSION STONE 2004)
Institute of Geochemistry, Mineralogy and Mineral Resources
Faculty of Science
Charles University in Prague
Albertov 6
128 43 Prague 2
Czech Republic
tel: +420-221951500
fax: +420-221951496
e-mail: prikryl@natur.cuni.cz or richprikryl@hotmail.com

AUTOUR DE LA CUISINE

Clermont-Ferrand, France, 22-24 April

Dear colleagues,

Appended below is a list of the papers to be given at a conference to be held at Clermont-Ferrand 22-24 April this year.

Amy Bogaard

Archaeobotanical approaches to the secondary products revolution model.

William Cavanagh

Food preservation in Greece during the Late and Final Neolithic periods.

Philippe Charlier

Aspects anthropologiques et paléo-pathologiques de la malnutrition à Argos.

Oreste Decavallas

A la recherche des aliments dans l'Egée préhistorique : analyses chimiques de résidus organiques conservés dans les poteries.

Hamish Forbes

Secondary products in the early Aegean.

Armelle Gardeisen

Quelques données concernant l'économie vivrière et l'alimentation carnée entre la fin du Néolithique et l'âge du Bronze.

Paul Halstead

Carcasses and commensality : investigating the social context of meat consumption in Neolithic and Early Bronze Age Greece.

Laurence Hapiot

Apport de la paléodontologie à la reconstitution des régimes alimentaires.

Valasia Isaakidou

Lunching in the Labyrinth : consumption of domestic animals at Neolithic-Early Minoan Knossos.

Anna Lagia and Sotiris Manolis

Health and diet during the Middle Bronze Age in the Peloponnese: the case of Kouphovouno.

Christopher Mee

Au dehors de la cuisine? Neolithic pottery in the Peloponnese.

Eirini Petroutsou, Sotiris Manolis and Michael Richards

Stable isotope analysis of human and faunal remains from the Early Helladic site of Perachora, Korinth, Greece.

A. Pilali and K. Papanthimou

Les installations culinaires dans un village du Bronze Ancien en Grèce du nord: Archontiko Giannitson

Maia Pomadère

Des enfants nourris au biberon à l'Âge du Bronze.

Sandra Prévost-Dermarkar and Evi Papadopoulou

Il n'y a pas de cuisine sans feu : les structures de combustion en Grèce du nord au Néolithique et à l'Âge du Bronze dans une perspective de techniques culinaires.

Josette Renard

Les différentes approches (pluridisciplinarité) concernant l'étude de l'alimentation et des pratiques alimentaires (historique, méthodologie, apports, perspectives).

Maria Roumpou, K. Psaraki, V. Aravantinos and Carl Heron

Early Bronze Age cooking vessels from Thebes : organic residue analysis and archaeological implications.

Jim Roy

La consommation de viande canine en Grèce ancienne : préjugés modernes et antiques.

Tatiana Theodoropoulou

L'exploitation des faunes aquatiques.

Peter Tomkins

Between communality and competition: changing strategies of ceramic consumption during the Cretan Neolithic.

Zoi Tsirtsoni

Des pieds pour quoi faire ? Récipients à pieds du Néolithique et du Bronze Ancien en Égée.

Duska Urem-Kotsou and Kostas Kotsakis

Pottery, cuisine and community in the Neolithic of north Greece.

Tania Valamoti

Traditional foods and culinary novelties in Neolithic and Bronze Age northern Greece: the archaeobotanical evidence.

William Cavanagh

Professor of Aegean Prehistory and Head of Department
Department of Archaeology

University of Nottingham
NG7 2RD
UK

Phone: +44 (0)115 951 4836

Fax: +44 (0)115 951 4812

E-mail: Bill.Cavanagh@nottingham.ac.uk

ARCHAEOLOGICAL SCIENCE OF THE AMERICAS

Dear colleagues,

Just a reminder. . . Our deadline for submission of abstracts for posters and presentations is January 31, 2004. Both professionals and students are encouraged to present.

ARCHAEOLOGICAL SCIENCE OF THE AMERICAS

The Inaugural Symposium
Sept. 23rd - 26th, 2004
Tucson, Arizona
USS Arizona Memorial Union

Call for Papers and Posters

The organizing committee of the Inaugural Archaeological Science of the Americas Symposium is pleased to solicit papers and posters to be presented between September 23 and 26, 2004 on the campus of the University of Arizona. This event is intended to encourage regular and sustained collaboration between archaeologists, conservation scientists, natural scientists, and contract researchers engaged in the development of archaeological science in the Western Hemisphere. This unique meeting will be hosted by graduate students in the Department of Anthropology at the University of Arizona. The Integrative Graduate Education and Research Traineeship (IGERT) Program in Archaeological Science at the University of Arizona will co-sponsor this event. Researchers at all levels of experience and training are invited to participate. A special invitation is extended to colleagues from Canada, Mexico, Central America, and South America. Investigators from any "American" institution are encouraged to present, regardless of the region of the world in which they conduct fieldwork.

Abstracts for posters and 20-25 minute oral presentations should be limited to 250 words or less and should clearly address how developing methodologies in interdisciplinary archaeological science can be employed to address larger anthropological issues. The event's format mirrors the Archaeometry UK meetings. Sessions will explore seven major topics in the field of archaeological science: 1) Catastrophes and Cultural Reaction, 2) Geoarchaeology, 3) Conservation Studies and Ephemeral Remains, 4) Spatial Analysis and Remote Sensing, 5) Chronometry, 6) Human-Environmental Interaction, and 7) Material Culture Studies. Applicants may choose the session in which they wish to present their work, but are encouraged to discuss how their research in archaeological science bridges topic headings.

Possible presenters will be notified of their acceptance by March 1, 2004 and a final program will be delivered to participants by June 1, 2004. Registration fees are \$40 for professionals and \$30 for students. Checks are to be made out to the University of Arizona Foundation. Please note that none of the application fee is tax deductible.

For more information and application forms, please visit our website <http://w3.arizona.edu/~anthro/asa.shtml> or contact one of the organizing committee members directly:

R. Emerson Howell (rhowell@email.arizona.edu)
Kanani Paraso (paraso@email.arizona.edu)
AJ Vonarx (ajvonarx@email.arizona.edu).

We look forward to hearing from you and meeting you in Tucson in September 2004!

AJ Vonarx
Graduate Student - University of Arizona
Anthropology/Archaeological Science
Haury Building
Tucson, AZ 85721
(520)881-3407



ESRM CONFERENCE AND CAREERS **WORKSHOP IN LISBON**

Dear All,

This is just a reminder that the conference "Early Stage Researcher Mobility in Europe: Meeting the Challenges and Promoting Best Practice (ESRM2004)" organised by Euroscience, MCFA, Eurodoc and PI-net will take place at the Gulbenkian Foundation in Lisbon on 25-27 February 2004. For an up-to-date programme, information on how to contribute and the registration details please consult the conference web pages at www.mariecurie.org/esrm2004. A small poster (that you might want to put up on your notice board) can be found at www.mariecurie.org/esrm2004/poster.pdf.

The programme of the conference will be complemented by a special hands-on "Workshop for Early Career Researchers" to take place on Saturday, 28 February 2004, at the Faculty of Science, University of Lisbon. This workshop is organised jointly by Science's NextWave, MCFA, and ABIC (Associação dos Bolseiros de Investigação Científica) together with the EC-funded MOBISC project. Details can be found on the following web page: <http://nextwave.sciencemag.org/cgi/content/full/2004/01/13/2>

Please spread the word to anybody who might be interested!

>>>> Special note to all current Marie Curie fellows <<<<<

The European Commission has confirmed that the expenses related to the participation of current Marie Curie fellows in the conference ESRM2004 are to be regarded as eligible costs under the Marie Curie Fellowship project. In other words, these expenses should be reimbursed by the host institution from the Community contribution towards the research and administrative costs of the project. This applies both to individual and to host fellowships, except for industry host fellowships where no Community contribution to the management costs of the fellowship exists. For details please contact esrm2004@mariecurie.org.



GLOBAL PERSPECTIVES ON THE ARCHAEOLOGY OF ISLANDS

8-11 December 2004, University of Auckland, New Zealand

On March 1st, titles and abstracts (ca. 150 words) are due for an International Conference to be held at the University of Auckland, New Zealand, from the 8th to the 11th of December 2004, jointly organised by the Department of Anthropology, University of Auckland and the Institute of Archaeology, University College London. The objective of this conference is to bring together researchers actively engaged in the study of islands and island societies throughout the world to define common ground, to compare approaches, perspectives and the results of recent research, and to promote the investigation of the archaeology of the world's islands.

Anticipated major themes include: island landscapes, human ecology and environmental change, island languages and archaeology, maritime trade and exchange, seafaring, colonization, identity and insularity, and island demography and population history. Additional or alternative themes will be defined in response to received abstracts.

Those interested in offering a paper are asked to send a title and abstract of ca. 150 words, in any common document format to:

Matthew Campbell ml.campbell@auckland.ac.nz
James Conolly j.conolly@ucl.ac.uk

Please see the web site for additional information:
<http://www.arts.auckland.ac.nz/ant/islands/index.htm>

PREHISTORIC CERAMICS RESEARCH GROUP AND THE PREHISTORIC SOCIETY JOINT CONFERENCE

22nd - 24th October 2004, University of Bradford

First Call for Papers

PREHISTORIC POTTERY: RECENT RESEARCH

PLEASE SEND OFFERS OF PAPERS TO:

DR ALEX GIBSON,
HON. CHAIRMAN
PREHISTORIC CERAMICS RESEARCH GROUP
DEPT. OF ARCHAEOLOGICAL SCIENCES
UNIVERSITY OF BRADFORD
BRADFORD
BD7 1DP, UK

Tel.: ++ 44 (0)1274 235385
Email a.m.gibson1@bradford.ac.uk

THE DINIACOPOULOS FAMILY AND COLLECTION GREEK AND ROMAN ANTIQUITIES - AN INTERNATIONAL CONFERENCE

February 4-5, 2004 Montreal (Quebec)

The Diniacopoulos Family and Collection

The antiquities collected by the Diniacopoulos family have a long history in Quebec, from Vincent and Olga Diniacopoulos¹ arrival in Montreal in 1951 with crates of artifacts to their subsequent acquisitions and exhibitions at several venues around the city, and to the eventual deposition of a portion of their collection in the National Museum of Fine Arts of Quebec nearly a half-century later. The recent passing of Mrs. Diniacopoulos encouraged

renewed interest in the collection, prompted in part by the family's bequest of scholarship money to Concordia University, where their son, Denis, had long been a faculty member. This university, where the family's archives are now housed, in conjunction with The Montreal Museum of Fine Arts, proposed an exhibition of the Diniacopoulos collection, to be accompanied by a publication and a two-day conference presenting various aspects of the material contained within it. Thus was conceived the Diniacopoulos Project, a collaborative effort between the Rector's Office, and the Department of Classics, Modern Languages and Linguistics, Concordia University, and the Montreal Museum of Fine Arts.

The project was originally the brainchild of Clarence Epstein of Concordia and Gisele Wagner, the curator of the University of Laval Museum, where the collection had been held for many years. Some of it had been published in a brief catalogue (1983) and a few scholars had occasionally come to study individual pieces, but the collection had been neither systematically published nor exhibited, and it remained largely unknown, even within Quebec. In 200(?), the collection was moved to the newly established National Museum of Fine Arts of Quebec, the legal depository of the material. Concordia University's interest in the Diniacopoulos family and the inception of the project required that the collection be moved to Montreal, and in 2003 it came to the Montreal Museum of Fine Arts on a long-term loan.

The artifacts in the Diniacopoulos collection represent only a portion of their original holdings, but they nonetheless show wide geographical and chronological spans. Material from ancient cultures of the central and western Mediterranean--Egypt and Syria to Greece, Italy, and Cyprus<DATE from the Late Bronze Age through the Late Roman period of the 3rd-4th centuries C.E. Artifact types include Greek vases and iconography, Greek, Roman, and Egyptian sculpture, Greek epigraphy, and the minor arts, such as terracotta figurines, small-scale bronzes, and glass. A selection of these 75 works is now

exhibited alongside the permanent holdings of the Montreal Museum of Fine Arts and augments them considerably.

Publication

The Diniacopoulos collection now in Montreal has been published in a monograph (edited by J.M. Fossey and J.E. Francis); this will be available in the Museum bookshop in February. It consists of a number of academic essays, including explorations of the family and its collection, and examinations of specific artefacts and assemblages. These articles are followed by a complete catalogue of all the Montreal pieces.

Conference

A more complete examination of the Diniacopoulos family and its collection will be held at Concordia University in February 2004 (February 4-5, 9:15 am 3:30 pm, Hall Building, Concordia University, Room 767). This 2-day event brings together the scholars who contributed to the publication, but also others who address Diniacopoulos artefacts now located in other institutions in Canada (the Royal Ontario Museum; Queen's University). Augmenting the programme are papers on the social context in which the family engaged in its collecting, more of the Greek vases, and the conservation, reconstruction, and preservation of some of the pieces.

Further information on the conference or Diniacopoulos-related events may be obtained as follows:

Dr. Jane E. Francis
Department of Classics, Modern Languages and Linguistics
Concordia University
1455 de Maisonneuve Blvd. W.
Montreal, Quebec H3G 1M8
Phone: (514) 848-2424 (Ext. 2490): with voice mail
Fax: (514) 848-8679
Email: jane@alcor.concordia.ca

or

Dr. John M. Fossey
Curator of Archaeology
Musée des beaux-arts de Montréal
Cas postale 3000, succursale H
Montreal, Quebec H3G 2T9
Phone: (514) 285-1600 (Ext. 134)
Fax: (514) 285-1980
Email: jmfossey@mbamtl.org

or

<http://modlang-phoneticcc.concordia.ca/diniacopoulos/index.html>

10TH PIXE2004

Portoroz, Slovenia, June 4 - 8, 2004

Dear colleagues,

In the name of the PIXE2004 Local Organising Committee I am glad to inform you that the organisation of Conference is going on as planned.

As you have been informed the 10th International Conference on Particle Induced X-ray Emission and its Analytical Applications (PIXE2004) is taking place in Portoroz, Slovenia, June 4 - 8, 2004. You can follow the news and the Conference details at its home page: <http://pixe2004.ijs.si/>

Please, take into account that the first one of the Conference important dates, Deadline for abstracts, is approaching quickly. As announced we are expecting your abstracts by February 6, 2004. Please, use the electronic submission by sending abstracts as attachment to the e-mail address: pixe2004.si. We would appreciate on time submission of your contributions for keeping the Conference organisational schedule in time.

Please, omit this warning if you already sent your abstract(s) or that from any reason you decided to not participate at the PIXE2004 Conference.

Best regards,

Yours Sincerely,

Milos Budnar
PIXE2004 Conference chair

Contact information
Dr. Matjaz Kavcic, Conference Secretary
Jozef Stefan Institute
p.p.3000
SI-1001 Ljubljana
Slovenia
Phone: + 386 1 588 5266
Fax: +386 1 561 2276
e-mail : pixe2004@ijs.si

SUMMER SCHOOL COURSE ON METALS TECHNOLOGY, MICROSTRUCTURE AND CORROSION

UCLA, July 5th-16th 2004

This summer course at UCLA from July 5th-16th 2004 provides an overview of the technology of ancient metals, aspects of their extraction and alloying, the corrosion that ancient metals undergo and how this impacts their preservation. Understanding metallic structure and its inter-relationship with technology is essential in the interpretation of evidence, often of importance in archaeological investigations or the conservation of metallic artifacts.

This two-week course explored the crucial knowledge and research work of the last two decades that has substantially advanced our understanding of the processes of extraction, alloying, surface patination, metallic coatings, corrosion, and microstructure. The course involves laboratory work in the preparation and examination of metallic samples under the microscope, as well as lectures on the technology of metallic works of art.

Instruction also explores phase diagrams and stability diagrams of the common alloying systems and environments.

Metallographic samples available for study represent most of the major cultural areas of the world, including Bronze Age Europe, ancient silver, Renaissance bronzes, iron, China from the Warring States to the Tang Dynasty, Japanese sword samples, Indian high-tin bronzes, and South American and North American copper and gold-copper alloys.

The course is limited to 20 participants. Course fee is \$900.00

Enroll on-line at : www.summer.ucla.edu/institutes.

ΘΕΣΕΙΣ ΕΡΓΑΣΙΑΣ/ΥΠΟΤΡΟΦΙΕΣ –
JOB VACANCIES/FELLOWSHIPS

NYMM POSITION IN EGYPTOLOGY

RESEARCH ASSOCIATE

Department: Lila Acheson Wallace Research Curatorship in Egyptology

The Metropolitan Museum of Art

STARTING DATE: December 15, 2003

The Wallace Curatorship of Egyptology is a small, independent two-person office/department devoted to the research and publication of the Metropolitan Museum's Egyptian collections and archives. Its activities center on the material culture of Egypt; current projects are mirrors, decorated vessels, MMA Assasif excavations, and composite sculpture. Publication may take the form of electronic databases; therefore, advanced computer skills are essential. Current networked PC programs are Windows 2000, Outlook 2000, Access, Filemaker Pro and Excel; Citation 8 is used for bibliography.

Administrative responsibilities are related to the publications program: they include departmental budget planning and management, departmental purchasing and accounting, and contacts with various resource departments in the Museum. The position demands a flexible, highly organized, detail-oriented, articulate individual sensitive to confidentiality.

The position has been approved for 28 hours/week on a part-time basis. Salary is hourly, and health insurance is available after one year's employment. Experience living in a large city and work in a large institution is helpful.

Preferable commitment of two years.

Email or Fax cover letter and detailed resume (including appropriate course work), with contact information for 3 academic references to:

The Metropolitan Museum of Art
1000 Fifth Avenue
New York, NY 10028-0198
Fax: 212-570-3882
Email: employoppty@metmuseum.org

No phone calls please

AEGEAN PREHISTORY POSITION IN OXFORD UNIVERSITY

The School of Archaeology and Faculty of Classics (in association with Keble College) propose to make an appointment to The Rachel and Sinclair Hood Lecturership in Aegean Prehistory in conjunction with a Tutorial Fellowship at Keble College under arrangements described in the further particulars. The combined University and College salary will be according to age on a scale up to £42,900 per annum (under review).

The successful candidate will be a scholar and teacher with wide interests and an outstanding research record in Aegean prehistory and protohistory, and will be expected to teach the subject to a high standard at both undergraduate and graduate level.

Further particulars, containing details of the application procedures and of the duties, may be obtained from Lidia Lozano, School of Archaeology, 36 Beaumont Street, Oxford OX1 2PG (lidia.lozano@arch.ox.ac.uk), or by visiting the School of Archaeology website (<http://www.arch.ox.ac.uk/schoolarch/jobs.phtml>). The closing date for applications is Wednesday 18 February 2004.

The University is an equal opportunities employer.

Prospective applicants may consult: Dr J. J. Coulton (jim.coulton@classics.ox.ac.uk).

Dr S. R. F. Price
Lady Margaret Hall, Oxford OX2 6QA
simon.price@lmh.ox.ac.uk
<http://users.ox.ac.uk/~srfprice/simonprice.htm>
<http://sphakia.classics.ox.ac.uk>
<http://crete.classics.ox.ac.uk>

ΝΕΕΣ ΕΚΔΟΣΕΙΣ – NEW PUBLICATIONS

PAPERS FROM THE INSTITUTE OF ARCHAEOLOGY - PUBLICATION OF VOLUME 14 (2003)

The editorial committee for PIA (Papers from the Institute of Archaeology) is pleased to announce the recent publication of Volume 14 (2003).

PIA is the annual post-graduate research journal of the Institute of Archaeology, UCL, the largest archaeology department in Britain. PIA is a refereed journal that aims to promote multi-disciplinary research in archaeology, with content coming mostly from present and past post-graduate research of students at the Institute, although papers are also solicited from outside.

The contents of Volume 14 include:

Forum: Year Zero for the Archaeology of Iraq by ROGER MATTHEWS (Institute of Archaeology, UCL) with responses by HARRIET CRAWFORD, LAMIA AL-GAILANI WERR, SOPHIA LABADI, MARC VAN DE MEIROOP and JOHN SIMMONS

Interview: with PROF. DON BROTHWELL (University of York)

Research Papers:

MICHAEL BURNS The Trophy in South Italic Iconography of the Fourth Century BC
HUGH KILMISTER Visitor Perceptions of Ancient Egyptian Human Remains in Three UK Museums
SERENA LOVE Questioning the Location of the Old Kingdom Capital of Memphis
GEOFFREY TASSIE Tattooing in Ancient Egypt and Nubia
HARALD ALEXANDER VELDHUIJZEN Slag_Fun A New Tool for Archaeometallurgy: Development of an Analytical (P)ED-XRF Method for Iron-Rich Materials

Fieldwork Reports:

CHRISTOPHE HELMKE The 2002 Season Investigations at Pook s Hill, Belize
QUETTA KAYE A Field Survey of the Islands of Carriacou, West Indies

The issue also includes Reviews of Conferences, Books and Exhibitions.

More information about PIA, instructions for ordering this volume and back issues, and guidelines for potential contributors can be found at the PIA website <http://www.ucl.ac.uk/archaeology/pia> or by contacting PIA directly by e-mail at pia.journal@ucl.ac.uk

Sincerely,

Peter Popkin, on behalf of the PIA editorial committee

Peter R. W. Popkin
Institute of Archaeology
University College London
31-34 Gordon Square
London, England
WC1H 0PY
E-mail: tcnprp@UCL.AC.UK



ΑΝΑΚΟΙΝΩΣΕΙΣ - ANNOUNCEMENTS

VENTRIS MEMORIAL AWARD

The Institute of Classical Studies invites applications for the 2004 Ventris Memorial Award for Mycenaean Studies. The fund was established in 1957 in memory of Michael Ventris to promote research in:

- (1) Linear B and other Bronze Age scripts of the Aegean and Cyprus and their historical and cultural connections.
- (2) All other aspects of the Bronze Age of the Aegean and Cyprus.

Applications must be typewritten and should be sent to the Secretary, Institute of Classical Studies, Senate House, Malet Street, London WC1E 7HU not later than 23 February. Applicants should give particulars of age, qualifications, academic record and should outline the work they intend to pursue in the event of the Award being made to them. They should also give names and address of two referees, and, at the same time, ask the referees to write independently in support of their application.

For further information please visit the Institute's Website: www.sas.ac.uk/icls/institute

Dr O. H. Krzyszkowska
Institute of Classical Studies
Senate House
Malet Street
London WC1E 7HU
tel: (+44) 0207 862 8715
fax: (+44) 0207 862 8722
olgak@sas.ac.uk

CURRENT RESEARCH IN THE PLEISTOCENE, VOLUME 21, 2004

Call for Papers

Current Research in the Pleistocene has become one of the foremost publication outlets for Quaternary scientists of the Americas and the Eastern Asian Pacific Rim. It is not hard to understand why this is so. Although other publications occasionally publish short papers in the relevant disciplines, it is clear that Current Research in the Pleistocene fills a need. The short contributions for CRP are not intended to take the place of the extended monograph, but they are a means of getting the information and ideas out to the research community with a minimum of fuss and bother. The short turnaround time means that the research will be accessible to other scientists worldwide on a timely basis. Finally, packaging 40 or 50 papers on Pleistocene research together insures that a broad audience of interested scholars will be reached.

The last point may be the most important. The unique advantage of CRP, for authors and readers alike, is the incredible density of relevant information that is presented in each volume. Looking for relevant articles in many scientific journals is like looking for oases in the desert - they can be few and far between. But each volume of CRP is a cornucopia of information directly or indirectly relevant to Quaternary scientists and anyone interested in Ice Age America and the initial discovery of this New World by humans.

Information for Contributors

GENERAL INFORMATION

Categories of notes are: 1) Archaeology, 2) Physical Anthropology, 3) Paleoenvironments (with subsections: Plants, Invertebrates, Vertebrates and Geosciences), and 4) Special Focus. The last category is reserved for a pre-selected topic for which CSFA solicits manuscripts. No more than 65 papers will be accepted for each issue. Each contributor will have no more than one paper as senior author.

Manuscripts should be of note length, up to 750 words plus references (or 400 words with one figure and caption). They should be current, original, unpublished, and not submitted to another journal. Most word-processing programs have a word-count mechanism; please use it. If the text of your manuscript is more than three pages (12-point type, double-spaced, 1-inch margins), then it is probably too long.

We require two hard copies of your manuscript and, on acceptance of your manuscript, a computer file on CD or 3½" diskette. Please note the number of words at the top of each hard copy. We accept formatted text files from most popular word-processing programs for Macintosh and Windows (Windows preferred). To insure that we can interpret your article, we suggest that you also include a text file of your article in rich text format (.RTF) on your diskette. Be sure to indicate on the label of the diskette

the name and version of the word-processing program you used (e.g., MicroSoft Word XP, WordPerfect 6.0).

REPRINT POLICY

The CSFA does not provide reprints to authors. However, authors may purchase copies of CRP at a discounted rate. We suggest authors make photo copies of their papers for distribution.

REVIEW PROCESS

Criteria for manuscript acceptance include order of receipt, length, appropriateness of topic, and validity of research. Manuscripts are reviewed by the CRP editor and a panel of international associate editors chosen from the appropriate fields. Contributors will be notified of the acceptance of the paper as soon as possible. Some revisions may be required. All manuscripts are edited for style and grammar. One of the practical goals of the journal is to provide quick turnaround time for the printing of manuscripts; therefore, authors do not review galley or page proofs. It is imperative that authors carefully proof their manuscripts for content, journal style, and grammar. We also suggest that all manuscripts be reviewed by a colleague prior to submission.

FORM AND STYLE

The following are some preferred abbreviations, words, and spellings: archaeology; Paleoamerican (Paleoindian implies a descent relationship); ca. (circa); RCYBP (radiocarbon years before present); CALYBP (calendar years before present); early, middle, late (e.g., early Holocene); 14C; in situ; et al.; pers. comm. (e.g., "C. L. Brace pers. comm. 1998"); CRM (cultural resource management); and AMS (accelerator mass spectrometer technique of radiocarbon dating). Metric units should be used and abbreviated throughout: mm, cm, m, km, ha, m².

Counting numbers, used to express a number of objects, are written out when they start a sentence and for quantities of one through nine, and are written as Arabic numerals for quantities of 10 or more (example: "researchers recovered two choppers and eight knives"; example: "researchers recovered 10 choppers and 126 knives"). When quantities fewer than 10 and greater than 10 appear in the same sentence, consistency governs (example: "researchers recovered 14 choppers and 5 knives.") Counting numbers greater than 999 should include a comma (example: "1,230 mollusks, 22,137 flakes"). Note the exception to this rule when expressing dates (see below).

Numbers of measurement, which are expressed as a decimal fraction, are written as Arabic numerals regardless of whether a decimal point appears or not (example: "3.5 m, 8 km, 1 kg, 52.34 cm, 3.0 ft").

Radiocarbon dates are expressed in 14C years before present (RCYBP) and should include the standard error and the laboratory number (example: "11,000 ± 250 RCYBP (A-1026)"). Dates referring to geologic time, radiocarbon dates corrected for error, and dates inferred by other means such as TL and OSL dating are expressed in calendar years before present (CALYBP) (example: "85,000 CALYBP). Omit the

comma when the year is less than 10,000 (examples: "8734 ± 90 RCYBP (A-1026)" "9770 CALYBP").

All underlined and italicized words will be italicized in final form. Use of Latin or common names is acceptable, but include the name not used in parentheses following first usage; e.g., "researchers recovered the dung of the Shasta ground sloth (*Nothotheriops shastensis*).\" If technical jargon or abbreviations are used, provide an explanation in parentheses or use a more common term.

References cited in the text must adhere to the style guide printed in *American Antiquity*, 48 (2):429-442 (the style guide can also be found on the Web site of the Society for American Archaeology, www.saa.org); this facilitates the editing for style used in CRP. Citations used in the text are as follows: ". . . according to Martin (1974a, 1974b)," ". . . as has been previously stated (Martin 1974; Thompson 1938)." Crosscheck all references with the original work-this is where most problems occur. CRP editors are not responsible for reference errors.

Use active voice when possible. Passive voice often lengthens a manuscript with additional, unnecessary verbiage. Use "The research team recovered the artifacts in 1988," rather than "The artifacts were recovered by the research team in 1988."

ILLUSTRATIONS

Tables are acceptable that will fit on half a page and are legible at that size. You must provide tabular information on diskette together with a hardcopy that shows the arrangement (rows and columns).

One figure, which may be a photograph or a drawing, is permitted with each article. A black-and-white (not color) glossy print of a photograph must be at least 5" in height and width. A photocopy ("Xerox" copy) of a photograph is not acceptable quality for publication. Write or type the manuscript title and author's name on a label, then affix the label to the back of the photograph. Do not write on the back of a photograph.

Figures must be either ink drawings or clean laser printouts of computer-aided graphics. Pencil drawings are not acceptable publication quality. All lettering in the figure must be typeset or dry transfer (no hand lettering). Your graphic will be reduced to the appropriate size for the final printed page. It is neither necessary nor desirable to submit publication-size graphics. It is sometimes necessary for us to redraw a submitted figure, which can be difficult if the original is small and difficult to read. Ideally, the figure you submit should fill at least half of an 8½-by-11-inch sheet of paper. Check the figure prior to submission to assure that all lines and letters are clear and legible.

A photograph or figure must have a caption that identifies it. The caption must be cited in the text (example: ". . . as seen in Figure 1"). Photographs and figures will not be returned.

AUTHOR CHECKLIST

Before sending your submission, check your manuscript to verify it is the correct

length and proper style (1-inch margins, double spaced, 12-point type). Verify that your package contains the following:

A 3½" floppy disk or CD containing the manuscript text and any tables in a common word-processing format (an additional copy of the text and tables in rich text format (.RTF) is highly recommended);

Two paper copies of the manuscript text;

Two paper copies of any illustrations or tables;

Two glossy copies of any photos;

A 3½" floppy disk or CD containing the digital file of computer-drawn illustrations (e.g., Adobe Illustrator, CorelDraw, PhotoShop) is highly recommended;

Complete information on how to contact all the author(s), including mailing address, telephone number, and e-mail address.

DEADLINES

Manuscripts must be postmarked by March 15. Since acceptance criteria include order of receipt, we strongly suggest you submit your manuscript as early as possible. Manuscripts submitted from outside North America should be sent express mail or first-class air mail.

Please send submissions to:

CRP Editor
Center for the Study of the First Americans
Department of Anthropology
Texas A&M University
4352 TAMU
College Station, TX 77843-4352

Robson Bonnicksen Director and General Editor
e-mail: rbonnicksen@tamu.edu

Michael R. Waters Associate Director and Editor, CRP
e-mail: mwaters@tamu.edu

Laurie Lind Office Manager
e-mail: csfa@tamu.edu

Michael R. Waters
Professor of Anthropology and Geography
Associate Director, Center for the Study of the First Americans
Executive Director, North Star Archaeological Research Program
Mailing Address:
Department of Anthropology
Texas A&M University
4352 TAMU
College Station, TX 77843-4352

Phone: 979-845-5246

Fax: 979-845-4070

ANNOUNCING A NEW LIST ETANA- ABZU-NEWS

We are pleased to announce the availability of a new mailing list that will serve to inform the public of developments at ETANA: Electronic Tools and Ancient Near Eastern Archives, and of additions to Abzu, ETANA's guide to the ancient Near East on-line. Instructions for adding your address to the list can be found at:

<https://listhost.uchicago.edu/mailman/listinfo/ETANA-Abzu-news>

The ETANA project seeks to serve as a model of how a discipline-specific content site in ancient Near Eastern Studies can be constructed to become the dominant site for that discipline. ETANA will take a leadership role in developing standards specific to this discipline, test altruistic funding models, utilize OpenArchive metadata standards and create discipline-specific harvest engines to work with these metadata. ETANA will create a structure whereby scholarship can be accessible from data capture to finished scholarship on a single site. It will host data capture and access, core texts and born-digital publications in an environment of rights management, appropriate levels of peer review, and archival permanence. ETANA encompasses the primary portal in ancient Near Eastern Studies: Abzu, and the multiple rich image databases being created in the discipline.

Scholarship is enhanced by technological innovations that facilitate communication and expedite the efficient sharing of research and ideas. No less than other disciplines, the study of the ancient Near East promises to be enriched significantly by the development of a singular, far-reaching resource for research that will be widely accessible to professionals and amateurs alike. To that end, ETANA brings together a consortium of universities and academic societies in order to develop and maintain a comprehensive, unified Internet site for the study of the ancient Near East.

ETANA is a cooperative project of:

American Oriental Society | American Schools of Oriental Research | Case Western Reserve University | Cobb Institute of Archaeology at Mississippi State | Oriental Institute of the University of Chicago | Society of Biblical Literature | Sonia and Marco Nadler Institute of Archaeology of Tel Aviv University | Vanderbilt University | Virginia Polytechnic and State University

Support for ETANA has been provided by funding from the Andrew W. Mellon Foundation (8/00 to 2/02, 6/01 to 8/02) and the National Science Foundation (Continuing grant IIS-0325579).

Please forward this announcement wherever it may be useful.

-Chuck Jones- for the ETANA team

Charles Ellwood Jones
Research Associate - Bibliographer
The Oriental Institute - Chicago

1155 E. 58th St. Chicago IL 60637-1569

USA

Voice (773) 702-9537 Fax (773) 702-9853

ce-jones@uchicago.edu

http://www-oi.uchicago.edu/OI/DEPT/RA/Research_Arch.html



INTERNET SITES



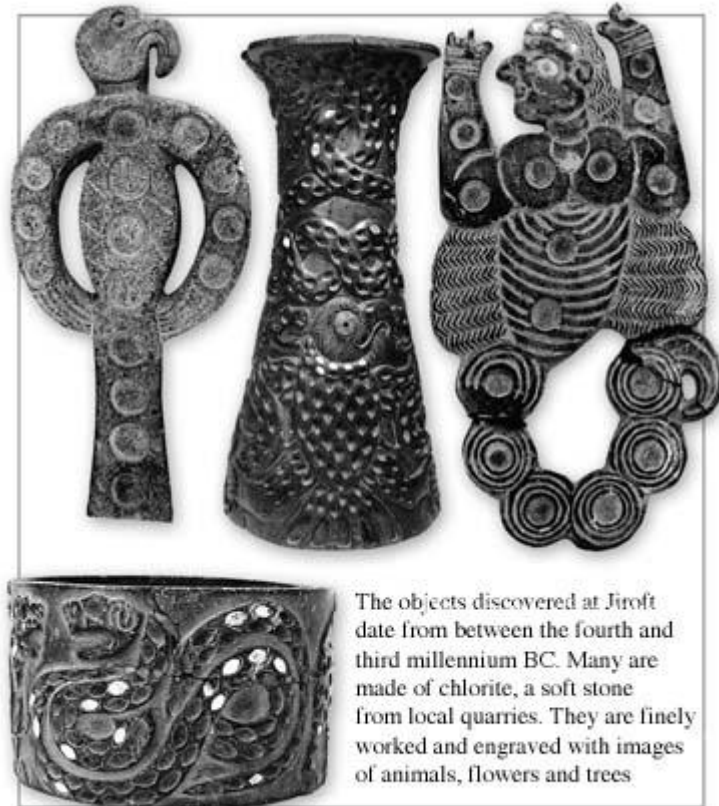
LONDON AND PARIS MARKETS FLOODED WITH LOOTED IRANIAN ANTIQUITIES

Thousands of objects have been plundered from a newly discovered site at Jiroft

By Edek Osser

JIROFT, IRAN. In January 2001 a group of Iranians from Jiroft in the southwestern province of Kerman stumbled upon an ancient tomb. Inside they found a hoard of objects decorated with highly distinctive engravings of animals, mythological figures and architectural motifs.

They did not realise it at the time but they had just made one of the most remarkable archaeological discoveries of recent years, one that is radically altering accepted notions of the development of the world's earliest civilisations in Iran and Mesopotamia between the fourth and third millennia BC.



The objects discovered at Jiroft date from between the fourth and third millennium BC. Many are made of chlorite, a soft stone from local quarries. They are finely worked and engraved with images of animals, flowers and trees

A few weeks after the discovery, officials from Iran's Ministry of Culture, vastly outnumbered by local people, watched hopelessly as thousands systematically dug up the area. The locals set up a highly organised impromptu system to manage the looting: each family was allocated an equal plot of six square-metres to dig.

This organised pillaging continued for an entire year. Dozens of tombs were discovered, some containing up to 60 objects, and thousands of ancient objects were removed. All of these were destined for overseas markets.

In February 2002 Iran's Islamic police finally arrived in force to stop the destruction. Some 2,000 objects were confiscated from locals in Jiroft and other hoards of the ancient artefacts ready to be shipped overseas were seized in Tehran and at Bandar Abbas.

The objects confiscated by the police are unlike anything ever seen before by archaeologists. Many are made from chlorite, a grey-green soft stone, others are in copper, bronze, terracotta, even lapis lazuli. They are now being studied by a group of Iranian archaeologists led by Professor Yousef Majidzadeh.

Official excavation of the site began in February 2003. It is focusing on both the necropolis, which was looted extensively, and on an ancient settlement not discovered by the looters.

The finds at Jiroft were first publicised last August when an illustrated catalogue of some of the objects was circulated at a conference in Tehran (Yousef Majidzadeh, Jiroft: the earliest Oriental civilisation, Organisation of the Ministry of Culture and Islamic Guidance, Tehran, 2003).

But much of the damage done at Jiroft is irreversible: the tombs that were plundered were completely emptied and hoards of the artefacts have already appeared for sale in Europe. In 2002 vases from the site were offered for sale at Drouot in Paris and, according to market specialists, the artefacts are on offer with several dealers in France. They are usually catalogued as vases from "Kerman" or with the more generic description of "Middle Eastern".

A group of some 80 Jiroft artefacts was known to be on offer in London last year with a price tag of £600,000. An important group, seen by the author of this article, is now being offered for sale in a prominent London gallery. The dealer said that he is worried about the growing number of fake Jiroft vases now circulating on the market. These could be the work of the very same locals who looted the site in the first place and have access to the same chlorite quarries of their ancestors.

Please visit the site: <http://www.theartnewspaper.com/news/article.asp?idart=11491>
