



Επιστημονικό Σωματείο,
Έτος Ίδρυσης 1982, έδρα:
Κάνιγγος 27, 106 82 Αθήνα
(Ένωση Ελλήνων Χημικών)

**ΔΙΟΙΚΗΤΙΚΟ
ΣΥΜΒΟΥΛΙΟ:**

Γ. Φακορέλλης, Ν. Ζαχαριάς,
Κ. Πολυκρέτη, Θ. Βάκουλης,
Γ. Μπασιάκος, Ε. Αλούπη, Ε.
Κυριατζή

Πληροφορίες:

Γ. Φακορέλλης

E-mail: facorel@ha.uth.gr

Scientific Association, Year
of Establishment 1982,
Headquarters: Kaniggos 27,
106 82 Athens (Association
of Greek Chemists)

BOARD: Y. Facorellis, N.
Zacharias, K. Polikreti, T.
Vakoulis, I. Bassiakos, E.
Aloupi, E. Kiriati

Information: Y. Facorellis

E-mail: facorel@ha.uth.gr

Πληροφοριακό Δελτίο της Ελληνικής Αρχαιομετρικής Εταιρείας

- Ιανουάριος 2006 -

ΚΑΛΗ ΧΡΟΝΙΑ
HAPPY NEW YEAR

Newsletter of the Hellenic Society of Archaeometry

- January 2006 -

Nr. 59

ΠΙΝΑΚΑΣ ΠΕΡΙΕΧΟΜΕΝΩΝ – TABLE OF CONTENTS

ΣΥΝΕΔΡΙΑ – CONFERENCES/WORKSHOPS

107th Annual Meeting of the AIA, in Montréal, QC, January 5-8 2006, AIA workshop "Undertaking New Fieldwork: How to Turn Research Ideas into Active Projects"	page 4
107th Annual Meeting of the AIA, in Montréal, QC, January 5-8 2006, AIA colloquium "Living on the Edge: Cultural Intersections in Border Zones"	page 6
Mycenaean and Anatolians in the Late Bronze Age: The Ahhijawa Question, A Workshop, January 4-5, 2006, Concordia University, Hall Building Room 767, 1455 de Maisonneuve Blvd West Montreal, Quebec	page 8
Παγκρήτιο Σπηλαιολογικό Συμπόσιο, Οκτώβριος 2006, Ρέθυμνο	page 10
5 th International Conference on Photo-Excited Processes and Applications (ICPEPA5), Charlottesville, Virginia, USA, September 3-7, 2006	page 11
Computer Applications and Quantitative Methods in Archaeology (CAA), 34 th Annual Conference, April 18-21, 2006, Ramada Plaza Suites and Conference Center, Fargo, North Dakota, USA, Second Call for Papers	page 13
ARCHAEOLOGICAL MEETING OF THESSALY AND CENTRAL GREECE, 2003-2005, FROM PREHISTORY TO THE CONTEMPORARY PERIOD, 16-19 March 2006, Volos	page 16
Malta Summer School	page 17
12 th International, Cave Bear Symposium, 2-5 November 2006, Aridéa/Loutrá, District Pella, Macedonia, Greece	page 18
BANEA in Edinburgh 'Environments of Complexity' conference, 5-6-7 January 2006	page 26
1 st announcement of Postgraduate Cypriot Archaeology (POCA2006) – Edinburgh	page 27
Radiocarbon Conference in Oxford 3rd-7th April 2006	page 28
<u>ΘΕΣΕΙΣ ΕΡΓΑΣΙΑΣ/ΥΠΟΤΡΟΦΙΕΣ – JOB VACANCIES/FELLOWSHIPS</u>	
Position Advertisement, Director of the School (ASCSA)	page 29
Funding for graduate students, School of Geography and Earth Sciences, McMaster University	page 31

Classical Art/Archaeology Position at Cornell page 32

Assistant Professor Position, Department of Anthropology, University of
Hawai‘i page 33

Varna Summer Session of American Research Center in Sofia page 34

ΑΝΑΚΟΙΝΩΣΕΙΣ – ANNOUNCEMENTS

American Research Center in Sofia page 36

INTERNET SITES

Magic in Ancient Egypt on TAC page 38

Guide for Archaeology @ About.com, Stratified Samples, 12-01-05, Stratified
Samples, 12-07-05, Stratified Samples, 12-14-05 page 39

ΝΕΕΣ ΕΚΔΟΣΕΙΣ – NEW PUBLICATIONS

Ancient Starch Research page 43



ΣΥΝΕΔΡΙΑ - CONFERENCES/WORKSHOPS

107TH ANNUAL MEETING OF THE AIA, IN MONTRÉAL, QC, JANUARY 5-8 2006, AIA WORKSHOP "UNDERTAKING NEW FIELDWORK: HOW TO TURN RESEARCH IDEAS INTO ACTIVE PROJECTS"

The Student Affairs Interest Group (SAIG) of the Archaeological Institute of America is pleased to announce that it will sponsor the following workshop at the 107th Annual Meeting of the AIA, in Montréal, QC, January 5-8 2006:

Undertaking New Fieldwork: How to Turn Research Ideas into Active Projects

**Session 3D, Saturday, January 7, 9 AM-12 noon
Room 514ABC, Palais des congrès**

Workshop organized by Allison Sterrett-Krause (University of Cincinnati) and Alexander Meyer (Duke University)

Starting a new field project can be a daunting prospect for any archaeologist. American graduate programs rarely consider the practical aspects of designing and implementing a program of archaeological research in courses, yet such concerns are vital to the success of any excavation or survey. The process of establishing a new project entails a complicated set of requirements, which may vary widely from country to country, including government permitting, raising funds, and enlisting personnel. These aspects of fieldwork are especially intimidating for younger archaeologists who undertake their investigations without the direct guidance of an experienced mentor. This workshop is designed to provide a forum in which current and aspiring researchers can share information about the process of instituting and maintaining field projects around the world.

In this workshop, we explore some practical concerns associated with archaeological projects. We ask panelists to describe briefly their fieldwork experiences, with emphasis on specific challenges they have encountered as they have undertaken research in a given area of the world. In addition, each panelist sheds light on specific parts of the process, such as formulating a research plan, applying for permits, obtaining funding, assembling a team of collaborators, managing logistics on the ground, including a field school in archaeological research, and many others. We welcome practical advice for hopeful project directors, especially on how to maximize the chances of a proposal receiving sanction from academic institutions and local governments alike. Finally, we create an open discussion in which participants may direct specific questions to members of the panel, either individually or as a whole.

This workshop is designed as an opportunity for less-experienced archaeologists to learn about the mechanics of administering field projects. To appeal to as many aspiring research directors as possible, panelists include experts in Classical, Mediterranean, and New World archaeology and directors of both excavation and survey. We intend to provide an environment in which the logistical realities of starting and managing a field project can be demystified. Our goal is to empower younger scholars to undertake their own field projects, thereby expanding the body of knowledge available to all archaeologists.

Panelists:

Jack L. Davis, University of Cincinnati

Owen Doonan, California State University, Northridge

Steven J. R. Ellis, University of Michigan

Margaret Scarry, The University of North Carolina at Chapel Hill

Danielle Steen, Stanford University



107TH ANNUAL MEETING OF THE AIA, IN MONTREAL, QC, JANUARY 5-8 2006, AIA COLLOQUIUM "LIVING ON THE EDGE: CULTURAL INTERSECTIONS IN BORDER ZONES"

The Student Affairs Interest Group (SAIG) of the Archaeological Institute of America is pleased to announce that it will sponsor the following colloquium at the 107th Annual Meeting of the AIA, in Montréal, QC, January 5-8 2006:

Living on the Edge: Cultural Intersections in Border Zones

**Session 1C, Friday January 6, 9 AM-12 noon
Room 511BE, Palais des congrès**

Colloquium organized by Katherine Swinford (University of Cincinnati) and Lyra D. Monteiro (University of Michigan)

From migrations of only a few miles to voyages across oceans, the intersection of cultures is a constant of human history. These interactions take on diverse forms, which are in turn diversely reflected in the archaeological record. Recent developments in postcolonial theory and discussions of ethnicity and the construction of identity have opened up new areas of study for archaeologists working in these “border zones.” The study of these interactions may illuminate the various inclusive and exclusive mechanisms by which groups constructed their identities when confronted with other populations. The material evidence available from border zones presents particular challenges to interpretation, raising questions and providing insights into our understanding and definition of cultural groups in general, even those in so-called core areas. To explore these challenges, the five papers in this colloquium are grouped methodologically. They include both text aided and prehistoric case studies and are drawn from a wide geographical range, from India to Greece, Anatolia to Peru. They employ a variety of approaches, ranging from mortuary studies, to household archaeology, to iconographic analysis. Though the information on each particular area is significant in its own right, the real value of this cross-cultural panel is the opportunity it offers to share methods and techniques which may be useful to archaeologists studying border zones in other places and time periods.

Papers:

[The Warrior, the Citizen, and the Prince: Death-Ritual in Northern Greece](#)
Meg Butler, Stanford University

[Ethnicity and the People Without History: Using Prehistoric Archaeology to Study Interstate Ethnic Interaction in South Peru, ca. A.D. 1000](#)
Kenny Sims, University of Michigan

[When is a “Border Zone” Not a “Border Zone”? The Start of the “Dark Ages” in Western Anatolia](#)

Naoise Mac Sweeney, University of Cambridge

[Framing Greek and Eastern Artistic Mixture: The Case of the Lycian Sarcophagus of Sidon](#)

Mont Allen, University of California, Berkeley

[Dharma or Diplomacy? A Reassessment of Cultural Policy in the Indo-Greek Kingdom](#)

Jed M. Thorn, University of Cincinnati

Discussant:

Stephen L. Dyson, State University of New York at Buffalo



**MYCENAEANS AND ANATOLIANS IN
THE LATE BRONZE AGE: THE
AHHIJAWA QUESTION, A WORKSHOP,
JANUARY 4-5, 2006, CONCORDIA
UNIVERSITY, HALL BUILDING ROOM
767, 1455 DE MAISONNEUVE BLVD
WEST MONTREAL, QUEBEC**

Objectives of the Workshop

The objectives of the workshop are a) to assess the reinterpretation of the potentially critical Hittite document KUB 26.91 (pictured above, with autograph), and b) to reassess our perspectives on Mycenaean Greece and the interactions of the Mycenaeans with the Anatolians (Hittites and Luwians) in the Late Bronze Age, and in particular to explore the question of the political primacy of Mycenaean Thebes in the 13th century BCE. The group of scholars assembled for the workshop includes many of the most prominent researchers in the fields concerned with this issue: archaeologists, historians, linguists, and philologists, all of whom are currently active in the forefront of research in the area of Mycenaean-Hittite interaction, and are particularly concerned with the central issue of the status of Thebes as indicated by the recently-published Mycenaean documents from that site, and as further urged by the sensational (and controversial) reading of the Hittite document KUB 26.91 by Dr. Frank Starke.

Program

Wednesday, January 4

9:15 Opening Remarks

9:30 Frank Starke The Ahhiyawa Letter KUB 26.91

10:30 David Hawkins The Political Geography of the Arzawa Lands

11:10 Coffee Break

11:30 Trevor Bryce Links and Relationships between Greece and Anatolia in the Late Bronze Age

12:10 Gary Beckman 'Ahhiyawa und kein Ende': The Battle over Mycenaeans in Anatolia

12:50 Lunch

2:30 Itamar Singer Ahhiyawans Bearing Gifts

3:10 Craig Melchert Mycenaean and Hittite Diplomatic Correspondence: Fact and Fiction

3:50 Wolf-Dietrich Niemeier Millawanda/Miletus: Ahhiyawan Foothold in Western Asia Minor

4:30 Coffee Break

4:50 Eric Cline A Questionable Correspondence: The Case of the Missing Ahhiyawa Letters

5:30 Mark Hale The Author of KUB 26.91: Greek or Hittite?

6:10 Allison Kirk Anatolian Morphosyntactic Features in Greek Epic

6:30 David Mendelsohn Conflict Resolution in the Late Bronze Age: Hittites and Ahhiyawans at War and Peace

6:50 Antonia Katsapis Hittite and Mycenaean Funerary Ritual

Thursday, January 5

9:00 Calvert Watkins Thoughts on Myc. e-u-te-re-u (TH Ft 140.2), the Goddess Mali(ya)s, and Related Matters

9:40 Ian Rutherford Neleus at the Interface: The Ionian Migration Today

10:20 Margalit Finkelberg The Mycenaeans, the Anatolians, and the Dating of the Trojan War

11:00 Coffee Break

11:20 Tom Palaima Thebes and Other Mycenaean Kingdoms and their Foreign and Domestic Relations

12:00 Mary Bachvarova Milesian Tales at a Mycenaean Feast: Deer-Hunting, Ismenian Apollo, and the Hittite LAMMA God

12:40 Lunch

2:30 Anna Pagé Indo-European Poetics and Anatolian: Problems and Progress

2:50 Alexander Dale Sacred and Secular Poetry in Second-Millennium Anatolia and Mycenaean Greece

3:10 Taha Showleh The Mycenaean Engineers: Expertise and Provenance

3:30 Annette Teffeteller The Guardian of Thebes

4:00 Discussion

ΠΑΓΚΡΗΤΙΟ ΣΠΗΛΑΙΟΛΟΓΙΚΟ ΣΥΜΠΟΣΙΟ, ΟΚΤΩΒΡΙΟΣ 2006, ΡΕΘΥΜΝΟ

Αγαπητοί φίλοι

Τον Οκτώβρη του 2006 θα πραγματοποιηθεί στο Ρέθυμνο το 3^ο Παγκρήτιο Σπηλαιολογικό Συμπόσιο. Όποιος θέλει να λάβει μέρος ή απλά να το παρακολουθήσει, μπορεί να επικοινωνήσει με την Οργανωτική επιτροπή στα e-mail : 3pss@in.gr, aretaki@students.phl.uoc.gr και στα τηλέφωνα 6974777306 (Β. Σιμιτζής) και 6936492101 (Κ. Αρετάκη) .

Για περισσότερες πληροφορίες για τη θεματολογία του Συμποσίου και άλλα δέστε τη σχετική εγκύκλιο.

<http://www.phl.uoc.gr/files/051222/3ppsEGYKL1.doc>

<http://www.phl.uoc.gr/files/051222/3ppsAITHSH.doc>

Η Οργανωτική Επιτροπή

**5TH INTERNATIONAL CONFERENCE ON
PHOTO-EXCITED PROCESSES AND
APPLICATIONS (ICPEPA5),
CHARLOTTESVILLE, VIRGINIA, USA,
SEPTEMBER 3-7, 2006**

Dear Colleagues,

I would like to remind you, or inform you, about the fifth International Conference on Photo-Excited Processes and Applications (ICPEPA5), which will be held on September 3-7, 2006, in Charlottesville, Virginia, USA. On behalf of the co-Chairs of the conference, I would like to encourage you to participate in this conference. For more information please check the conference web site: <http://www.seas.virginia.edu/academic/icpepa5/> and the first Call for Papers in pdf format: <http://www.seas.virginia.edu/academic/icpepa5/ICPEPA5-1st.pdf>

Abstract Submission is now open. Abstracts can be submitted interactively by completing an electronic submission form at: <http://www.seas.virginia.edu/academic/icpepa5/abstracts.php>

Mark your calendars now for next September! We look forward to your early application and participation in the 2006 ICPEPA. Please feel free to contact me with any questions or comments.

Sincerely,

Leonid Zhigilei

On behalf of the 5-ICPEPA co-Chairs:

Leonid Zhigilei (USA)

Peter Hess (Germany)

Armando Luches (Italy)

Aaron Peled (Israel)

P.S.: Because we are using some combined distribution lists, some of you may receive multiple announcements, for which I apologize.

Leonid V. Zhigilei, Associate Professor
Department of Materials Science and Engineering
University of Virginia, 116 Engineer's Way
Charlottesville, VA 22904-4745
Tel: (434) 243-3582, Fax:(434) 982-5660
E-mail: lz2n@virginia.edu
Web page: <http://www.faculty.virginia.edu/CompMat/>

We will be happy to see you at 5-ICPEPA in September 2006:
<http://www.seas.virginia.edu/academic/icpepa5/>

**COMPUTER APPLICATIONS AND
QUANTITATIVE METHODS IN
ARCHAEOLOGY (CAA), 34TH ANNUAL
CONFERENCE, APRIL 18-21, 2006,
RAMADA PLAZA SUITES AND
CONFERENCE CENTER, FARGO,
NORTH DAKOTA, USA**

Second Call for Papers

Please share this announcement with colleagues.

Dear Colleague:

The Conference Organizing Committee for CAA 2006 invites you to participate in the Annual Conference of Computer Applications and Quantitative Methods in Archaeology (CAA).

You can participate in the conference by submitting an abstract for a paper presentation, symposium, poster, workshop, or roundtable panel. Or, simply attend the conference, with its open and cordial atmosphere, to learn more about new developments in computer applications and quantitative methods, and to meet and talk with international colleagues.

About CAA

CAA is an international organization with the goal of expanding fruitful communication between archaeologists, computer scientists, and mathematicians. The annual CAA conference provides the premier venue for the presentation and dissemination of studies on state-of-the-art and advanced computer technologies useful in the study of, preservation of, and access to archaeological resources. The conference also attracts museum specialists, graphic artists, geographers, physical anthropologists, design professionals, and more. The theme for CAA2006 is Digital Discovery: Exploring New Frontiers in Human Heritage.

Conference Topics

Conference papers (long and short forms), symposia, posters, workshops, and roundtable panels are welcome on any topic pertinent to CAA. Topics to be covered at the conference include but are not limited to the following.

1. Virtual Reality Modeling: Object Modeling; Site Modeling; Augmented and Immersive Environments; Game Engines.
2. Simulations and Complex Modeling: Paleoenvironments; Predictive Modeling; Artificial Intelligence.
3. 3D Data Capture, Manipulation, and Analysis: Object Modeling (laser, CT, photogrammetry, etc.); Object Reconstruction (pottery, bone, fossil, etc.); Computer Aided Shape Analysis.
4. Field Applications: Software; Hardware; Wireless Applications; GPS Applications; Geo-Archaeology.
5. Remote Sensing: Subsurface Prospecting; Low and High Altitude Sensing.
6. Geographic Information Systems: Intra-site; Region and Beyond; Terrain Mapping.
7. Informatics: Databases; Digital Libraries, Archives, Portals; Data Mining; Standards and Best Practices; Internet Applications; Multimedia Presentations.
8. Education: Classrooms; Museums; Other Informal (digital videos, audio tours, TV, etc.); Remote Learning.
9. Cultural Heritage Resources Management: Heritage and the Public (tourism, public trust, etc.); Professional Heritage Management.
10. Bio-Archaeology and Human Biological Heritage: Mummy Studies; Forensics; Anthropometry; 3D modeling of fossils.
11. Quantitative Applications: Statistical Analyses; Mathematical Modeling; Predictive Modeling.
12. Archaeometry: Chronology; Provenance Studies.
13. Maritime Archaeology: Data Capture; Nautical; Underwater Sites.
14. Theoretical Issues: All Topic Areas
15. Other Topics

Important Dates

Deadline for symposium proposal submission, EXTENDED to December 23, 2005.

Deadline for early registration, January 2, 2006.

Deadline for abstract submission for papers, roundtable panels, posters, January 2, 2006

Deadline for sponsorships, exhibits pace, and advertisement signup, February 1, 2006

More Information

To register for the conference and to submit an abstract, please visit the conference website at <http://www.caa2006.org/>. To stay abreast of conference news and developments, sign up for the CAA2006 Mailing List.

For questions or comments related to the CAA2006 conference, please send e-mail to: info@www.caa2006.org

For questions about renting a vendor booth at the CAA2006 Technology Expo, or sponsoring a conference event, please send e-mail to: sponsors@www.caa2006.org

We look forward to meeting you at CAA2006 in Fargo.

Dr. Jeffrey T. Clark
Chair, CAA2006 Fargo
Department of Sociology and Anthropology
North Dakota State University

PO Box 5075
Fargo, ND 58105.
USA



**ARCHAEOLOGICAL MEETING OF
THESSALY AND CENTRAL GREECE,
2003-2005, FROM PREHISTORY TO THE
CONTEMPORARY PERIOD, 16-19
MARCH 2006, VOLOS**

Following the success of [first AETHSE meeting](#) [ARCHAEOLOGICAL MEETING OF THESSALY AND CENTRAL GREECE] and pending the publication of its proceedings, we proceed to the organization of the second scientific meeting, in the period 16-19 March 2006.

The AETHSE is organized by the Department of History, Archaeology and Social Anthropology of the University of Thessaly, the Ephorates of Prehistoric and Classical Antiquities, of Byzantine Antiquities, of Contemporary and Modern Monuments of the Districts of Thessaly and Central Greece and the Special Regional Services of the Ministry of Culture.

The local Ephorates, the Universities, the Research Centres, the Institutes, the Foreign Archaeological Schools and the scholars who are active in the Districts of Thessaly and Continental Greece, are invited to participate.

<http://extras.ha.uth.gr/aethse2/en/index.shtml>

MALTA SUMMER SCHOOL

We send you this email to inform you about an initiative taken by Marc Vanlangendonck, Doctor in Anthropology at the University of Louvain (Belgium) and founder of Expeditions. In July and August 2006 we are planning a three week summer school in Malta. The object is to offer anthropology students a unique opportunity to acquire some 'in the field' experience. In Malta there are plenty of possibilities to reach this purpose. The islands present a kaleidoscope of past and present: a fascinating legacy of European culture and rural Mediterranean traditions, represented in the living history of the fishing villages. Situated in the heart of the Mediterranean, Malta possesses a typical island culture. Yet, this has not led to isolation, on the contrary. As a consequence of its location at the crossroads of maritime routes between Europe, Africa and Asia, Malta has always been strategically important. Many different cultures set foot on the islands, leaving their imprint. These foreign influences are for instance obviously present in the Maltese language. At the same time, Malta has a perfectly English-speaking population. This enhances the accessibility for foreign researchers like the starting anthropologist! Various topics for interesting field research are available: from architectural and religious sites to tourism and ethnic relations.

This project is initiated in cooperation with Prof. Dr. Leman, founder of the Interculturalism, Migration and Minority Research Centre (IMMCR), and supported by an international advisory board of experts in the field of anthropology and intercultural learning.

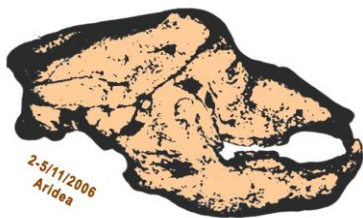
Although this summer school normally targets Belgian university students, we decided to reserve some places for applications of foreign students. Firstly, because the incorporation of new perspectives on anthropological research will form an asset to our project. Further, we are of the opinion that it proves increasingly important for young scientists (especially those in the field of anthropology), to conduct their own field research and be part of an international framework.

In attachment we send you some more detailed information about the way the summer school will be organized (<http://www.xpeditions.be/projects/anthropologyinmalta/anthropologyinmalta.html>). Of course you can also visit our website www.xpeditions.be and the website of IMMRC www.immrc.be. If you are in favour of this initiative, we would appreciate you to make it knowable to students in your department. We included a flyer that can be posted on a billboard for students, or you can forward this mail to organizations or people who might be interested.

If you have any further questions, we will be very happy to answer them.

With kind regards,

Anke Van Vossole
Summer School Project Manager
Expeditions



12th International Cave Bear Symposium (I.C.B.S.)
12ο Διεθνές Συμπόσιο για την Αρκούδα των Σπηλαίων (ΔΙ.Σ.Α.Σ.)

Aristotle University, School of Geology, 54124 Thessaloniki, Greece
Assist. Professor Evangelia TSOUKALA
Αριστοτέλειο Πανεπιστήμιο, Τμήμα Γεωλογίας, 54124 Θεσσαλονίκη
Επικ. Καθηγήτρια Ευαγγελία ΤΣΟΥΚΑΛΑ
Tel./Τηλ.: +302310 998517, 435738, mob./κιν.: +3069 77253836
e-mail: lilits@geo.auth.gr

Με ιδιαίτερη τιμή και ευχαρίστηση σας ανακοινώνουμε ότι ανατέθηκε στη χώρα μας η διοργάνωση του **12^{ου} Διεθνούς Συμποσίου για την Αρκούδα των Σπηλαίων (ΔΙ.Σ.Α.Σ.)** για το 2006, ύστερα από σχετική πρόταση του καθηγητή και ακαδημαϊκού Dr. Gernot Rabeder, Διευθυντή του Ινστιτούτου Παλαιοντολογίας του Πανεπιστημίου της Βιέννης, στο 11^ο ΔΙ.Σ.Α.Σ. που διεξήχθη στις 29/9 – 2/10/2005 στη Νυρεμβέργη της Γερμανίας.

Πρόκειται για ένα επιστημονικό συνέδριο με παγκόσμια εμβέλεια που αφορά κύρια στη μελέτη των απολιθωμάτων της Αρκούδας των Σπηλαίων, θέμα που χρήζει πολλαπλού επιστημονικού ενδιαφέροντος και απασχολεί εξίσου την Παλαιοντολογία, τη Γεωλογία, τη Βιολογία, την Οικολογία, άλλους κλάδους των Γεωεπιστημών και τα συναφή με αυτές ερευνητικά πεδία.

Το συνέδριο θα πραγματοποιηθεί υπό την αιγίδα του Τμήματος Γεωλογίας του Α.Π.Θ. κυρίως στην Αριδαία και στο Σπηλαιοπάρκο Αλμωπίας του νομού Πέλλας, στο διάστημα 2 – 5 Νοεμβρίου 2006. Συνδιοργανωτές είναι ο Δήμος Αριδαίας, η Νομαρχιακή Αυτοδιοίκηση Πέλλας και το Τοπικό Τμήμα Βορείου Ελλάδος της Ελληνικής Σπηλαιολογικής Εταιρείας.

Η πραγματοποίηση ενός τέτοιου συνεδρίου αποτελεί αδιαμφισβήτητα πόλο έλξης επιστημόνων διεθνούς κύρους και θα προβάλλει τη χώρα μας σε παγκόσμια κλίμακα ενισχύοντας τόσο το επιστημονικό κύρος, καθώς πρόκειται για το μοναδικό συνέδριο πάνω στο συγκεκριμένο αντικείμενο έρευνας, όσο και καθιστώντας κοινωνούς του πολιτισμού και του κάλλους του τόπου μας μια σημαντική ομάδα ανθρώπων.

Η επιλογή της περιοχής Αριδαίας ως χώρο διεξαγωγής του συνεδρίου αυτού δεν είναι τυχαία. Είναι γνωστό ότι εκεί βρίσκεται το πρώτο Σπηλαιοπάρκο της Ελλάδας και άπτεται άμεσα του ενδιαφέροντος του συνεδρίου, καθώς σ' ένα από τα σπήλαια της περιοχής έχει εντοπιστεί μία από τις σημαντικότερες θέσεις, όπου κατά την τελευταία παγετώδη περίοδο διαβιούσε η Αρκούδα των Σπηλαίων. Στο χώρο των Λουτρών άλλωστε διεξάγεται τα τελευταία δεκαπέντε χρόνια συστηματική παλαιοντολογική ανασκαφή από το Α.Π.Θ. υπό τη διεύθυνση της επίκουρης καθηγήτριας Ε. Τσουκαλά, υπό την εποπτεία του Υπουργείου Πολιτισμού.

Ο συνδυασμός λοιπόν του επιστημονικού ενδιαφέροντος του χώρου αυτού και του ιδιαίτερου φυσικού κάλλους που παρουσιάζει το καθιστά ιδανικό για τη διεξαγωγή μιας τέτοιας εκδήλωσης. Εξάλλου η επιλογή της ακριτικής αυτής γωνιάς της χώρας μας θα δώσει ώθηση στην τουριστική και πολιτιστική ανάπτυξη της περιοχής, η οποία προικισμένη απλόχερα από τη φύση θα γίνει ευρύτερα γνωστή και από μία άλλη διάσταση, αυτή της προϊστορίας.

Η Πρόεδρος της Οργανωτικής Επιτροπής
Επίκουρος Καθηγήτρια Ευαγγελία Τσουκαλά

12th International Cave Bear Symposium



**2-5 November 2006
in Aridéa/Loutrá
District Pella
Macedonia, Greece**

Conference Organizers

**School of Geology, Aristotle University of Thessaloniki
Commission for Quaternary research of Austrian Academy of
Science**

Institute for Palaeontology, University of Vienna

**Municipality of Aridea
Prefecture of Pella
Physiographical Museum of Almopia**

**HELLENIC SPELEOLOGICAL SOCIETY, DEPARTMENT OF NORTHERN
GREECE (TOTBE)**

Location

The congress will be held in Aridea (Pella District, Macedonia, N. Greece), a small town located 100km to the northwest of Thessaloniki, in the Almopia plain, close to the former Yugoslavian border. Oral and poster presentations will be performed in “Ksenitidion Center” in Aridea town. Accommodation and other activities will take place in the Loutra Aridea’s (spa) area and Loutraki village, 7 km to the west of Aridea, on the slopes of the Voras Mountain.

How to get there

Aridea can be reached using the national road from Thessaloniki to Giannitsa - Aridea town (see map). The trip lasts 90 minutes.

From Italy you can reach Aridea through the “Egnatia” highway. You can follow: Igoumenitsa - Ioannina - Grevena – Kozani - Veria - Naousa –Edessa - Aridea - Loutra. From Bulgaria you can follow: Thessaloniki - Giannitsa - Aridea - Loutra. From Skopje you can follow: the National road to Edessa through Giannitsa. For arrivals by air to the “Macedonia” International Airport of Thessaloniki (airport code SKG) or for arrivals by train to the city’s railway station that is the biggest in Greece and is located very close to the city centre, there will be welcoming at both destinations. After, there will be gathering in the Aristotle University area, in the center of the city, and scheduled departures by buses/cars for Aridea and Loutra.





Accommodation

“Loutra Aridea’s” and the surrounding area of Loutraki village have numerous guesthouses, small hotels and rooms to rent, offering a wide range of accommodation in all categories and costs.

Three possibilities for accommodation are proposed:

1) The near most Hotel “**Filoxenia**”, which is five minutes walking far from the Loutra Aridea’s (spa) area. There are 50 double-bedrooms, the 20 of which are luxurious, with a fireplace that cost 50€, including breakfast. The rest 30 rooms have either one double bed or two single beds and they are at the price of 30€ for one person and at a price of 35€ for two persons, including breakfast. There is an offer proposed for a lunch with an added cost of 6€ per person. Tel.: +30 2384091095, +30 2384091397, fax: +30 2384091075 (no available E-mail). The rooms canceled 10 days before the Symposium date, are without charge; otherwise half of the price have to be paid.

2) In the Loutra Aridea’s (spa) area there are few economical rooms (6€ per person), mainly for students, with a common use WC.

3) There is also the possibility of free camping in a properly prepared area in the Loutra Aridea’s (spa), for those who prefer living in nature.

Furthermore, there are possibilities for accommodation at small hotels and guesthouses, in the village of Loutraki.

A special website for more information is under construction:
<http://www.dimosarideas.gr>, <http://www.pella.gr/infoengl.htm>
<http://www.greekphotobank.gr/thumbnails.php?album=78>
http://www.museumsofmacedonia.gr/Anthropological_and_Nat_History/Laogr_Fys_Loutrakioy_Pella.html

Finally, the organizing committee could arrange accommodation for you.

Climate and Clothing

Weather in the area of Aridea during November is usually changeable. The temperature may range from 9°C during night to ~17°C during the day. The possibility of rain is high. For the spa facilities, your bathing suit is necessary.

Pre-registration

The pre-registration for the congress by the enclosed booking form should be answered before 31/01/06. There is no limit for the participants to attend the excursion.

Conference fees

The conference fee is 25 EUROS. The price includes:

- Entry to all congress presentations
- Refreshments and coffee during breaks on the day of presentations
- Dinner on the opening day, the day of presentations and the closing one
- A complete set of conference literature together with the symposium proceedings
- Coach trip on 4/11/2006

Conference fees are to be paid at the congress office at your arrival.

PRELIMINARY PROGRAM

Thursday, 2/11/2006 – Arrival day

	Gathering at the School of Geology, in the Aristotle University of Thessaloniki - visit at the Paleontological museum, where the famous Petralona hominid skull is exhibited. Scheduled departures for the Loutra Arideas area.
	Spa in the waterfall or the pool
21:30	Welcoming Dinner in the Loutra restaurant.

Friday, 3/11/2006 – Day of presentations

9:00-10:00	Official opening of the congress with welcome by the Mayor of Aridea etc.
10:00 till 19:30	Oral presentations may be given in English, with a time limit of 20 minutes per speaker. Poster presentations will take place in the same building. Detailed program will be announced in the 2 nd circular.
19:30-20:45	Visit to the Municipal Museum of Natural history of Aridea with bear remains from the excavation in the cave.
21:00	Dinner

Saturday, 4/11/2006 – Excursion day in Loutra Aridea's area

9:30 till 14:30	Visit and guiding to the Late Pleistocene site of the Bear-Cave where excavations have been carried out for 15 years with cave-bear and other associated remains. Visit to the unique showing cave of the area (the Varathron pothole), and the Cave B (Antarton cave) with archaeological interest. Secondly, visit to the other small caves of the speleological park of Almopia.
	<i>Speleo-equipment (overall, helmet, torch) is essential.</i>
	Lunch
14.30	Various excursions in the Rema Nicolaou gorge, along the river
15.30	with waterfalls, visit other caves, baths (spa), etc.
20:00	Closing Dinner -traditional music

Sunday, 5/11/2006 – Departure day

9:00	Departure from the Loutra Aridea's by bus Visit the Agios Georgios Cave in Kilkis that is the unique exclusively Latest Pleistocene hyaenid den in Greece. A reception by the Mayor of Kilkis town will be offered.
14:30	Arrival in Thessaloniki

Language

The official language of the symposium will be English. No simultaneous translation will be available.

Abstracts and full papers

All conference presentations will be published in the proceedings of the congress, for the format of which you will be informed in the second circular and for the posters as well. Authors contributing by oral or poster presentation shall provide the conveners with an extended abstract of one to two A4 pages including figures and references. The abstracts will be published, after peer review, in a special volume. The text should be provided as WinWord-file with Arial 11pt font and single spacing between lines. Illustrations should be provided also as a data file (JPEG or TIFF formats). Your extended abstracts should be sent by e-mail to the conference organizer at icbs12th@yahoo.gr, no later than 31 March 2006.

IMPORTANT DATES

- 31 January 2006 advance registration
- 31 March 2006 extended abstracts submission
- 10 September 2006 full papers
- The webpage of the Symposium is under construction (www.icbs12.geo.auth.gr)

Further information

For all your inquiries contact the conference organizer:

**Assist. Professor Evangelia Tsoukala
School of Geology, Aristotle University
54 124 Thessaloniki, GREECE
FAX (0030) 2310 998482
TEL. (0030) 2310 998517
MOBILE (0030) 6977253836**

E-mail: icbs12th@yahoo.gr



Pre-registration form
12th International Cave Bear Symposium

Surname:

First name:

Institute:

Address:

Country:

Telephone: **Fax:**

E-mail address:

I wish to participate: **Talk** **Poster**

Preliminary Title of study:

.....
.....
.....

I will attend the excursion: **Yes** **No**

Please return the pre-registration by 31st January 2006 at the latest to:

Ass. Prof. Evangelia Tsoukala
School of Geology, Aristotle University
54 124 Thessaloniki, GREECE
FAX (0030) 2310 998482
TEL. (0030) 2310 998517
MOBILE (0030) 6977253836
E-mail: icbs12th@yahoo.gr

BANEA IN EDINBURGH
'ENVIRONMENTS OF COMPLEXITY'
CONFERENCE, 5-6-7 JANUARY 2006

Dear All,

You may now see our programme and list of participants for the BANEA in Edinburgh 'Environments of Complexity' conference (as well as all other relevant information) online at <http://www.arcl.ed.ac.uk/banea/>

BANEA in Edinburgh takes place 5-6-7 January 2006.

Best,

Philip Karsgaard

Philip Karsgaard
Ph.D. candidate
Archaeology
School of Arts, Culture and the Environment
University of Edinburgh
Old High School
Infirmary Street
Edinburgh
EH1 1LT
Tel. (0131) 650 2560



**1ST ANNOUNCEMENT OF
POSTGRADUATE CYPRIOT
ARCHAEOLOGY (POCA2006) –
EDINBURGH**

POCA (Postgraduate Cypriot Archaeology) is an international forum for postgraduates and new scholars of Cypriot archaeology and cognate subjects. It is an opportunity for the developing research community to present work, exchange new ideas and meet in an informal context. Interested scholars from archaeology, classics and related disciplines are invited to attend or participate by submitting abstracts for **POCA 2006**.

For information see

<http://www.arcl.ed.ac.uk/poca2006/>

Edgar Peltenburg

Archaeology

University of Edinburgh

Edinburgh EH1 1LT

Scotland - U.K.

and

LEMBA ARCHAEOLOGICAL RESEARCH CENTRE, CYPRUS

<http://www.arcl.ed.ac.uk/arch/lemba/homepage.html>



RADIOCARBON CONFERENCE IN **OXFORD 3RD-7TH APRIL 2006**

This is just to remind you about the Radiocarbon Conference in Oxford 3rd-7th April 2006.

Preparations for the conference are now well advanced. The keynote address will be given by Colin Renfrew and we have planned a series of review talks to be given by Martin Suter, Bernd Kromer and Konrad Huguenot.

All details of the conference can be found on the conference WWW site:
<http://www.rlaha.ox.ac.uk/c14/conference19/>

The deadline for registration (payments to be made on-line) and abstract submission is 20th January 2006. We would be grateful if people, who have not already done so, can register and submit their abstracts in the next couple of weeks if this is possible as this will make planning easier.

Best wishes

Christopher Ramsey, Tom Higham, Diane Baker and Fiona Brock.

ΘΕΣΕΙΣ ΕΡΓΑΣΙΑΣ/ΥΠΟΤΡΟΦΙΕΣ –
JOB VACANCIES/FELLOWSHIPS

POSITION ADVERTISEMENT,
DIRECTOR OF THE SCHOOL (ASCSA)

Since there is some confusion as to whether the incumbent Director of the ASCSA is seeking a second term, and the advertisement for Director of the ASCSA did not make it clear that in fact he is not seeking a second term, the deadline for applications is hereby extended to January 31, 2006.

A revised information below.

Prof. Kevin Clinton
Chair, Committee on Personnel
American School of Classical Studies at Athens
6-8 Charlton St., Princeton, NJ 08540
Phone: 609-683-0800
Fax: 609-924-0578

POSITION AVAILABLE

DIRECTOR OF THE SCHOOL

The American School of Classical Studies at Athens seeks a distinguished scholar and experienced administrator for the position of Director of the School. The Director works with the School's Managing Committee and Trustees in developing and implementing the academic and fiscal policy of the School and reports to the Managing Committee through its Chair. The Director leads the School's mission in Greece and oversees the School's activities, including its academic program, excavations, and other research. The Director is expected to participate actively in the design of academic programs and the instruction of students at the School. All department heads report to the Director. The Director also oversees relations between the School and the host country. Candidates must demonstrate strong qualities of leadership and articulate clearly their vision for the future of the School.

The term is flexible, two to five years. It begins on July 2, 2007, and is renewable. Salary and benefits commensurate with rank and experience, housing in the Director's residence, travel, entertainment and research budgets provided. The incumbent is not seeking a second term. **The deadline for applications has been extended to January 31, 2006.** Candidates should send a *curriculum vitae*, a statement explaining their interest in the position and their vision for it (max. 750 words), and the names of three referees to K. Clinton, Chair, Committee on Personnel, American School of Classical

Studies at Athens, 6 - 8 Charlton Street, Princeton, NJ 08540-5232. ASCSA is an EO/AA employer.

FUNDING FOR GRADUATE STUDENTS, SCHOOL OF GEOGRAPHY AND EARTH SCIENCES, MCMASTER UNIVERSITY

Fully-Funded Graduate Student Opportunities

Immediate need for two students who wish to seek Ph.D. or M.Sc in Earth Sciences
Program start: September 2006 (or May 2006 if fieldwork component).

Dr. Jack Rink at the School of Geography and Earth Sciences at McMaster University is developing a number of projects in the geochronology of coastal landform evolution and in the geochronology of archaeological sites. A list of my publications can be viewed at my faculty homepage given below, and the research site (under construction) might also be of interest. These projects generally involve a significant fieldwork component along with laboratory experimental work. Projects involve application of state-of-the-art methods in geochronology of the young earth including optical luminescence and electron spin resonance dating.

Students who gain entry to our program receive full funding for the duration of their studies which encompass two-year (M.Sc.) and four-year (Ph.D) degrees in Earth Sciences, which includes funding for fieldwork in their projects. We are receiving applications for the graduate program now and applications should be received no later than January 15.

Please contact me directly (rinkwj@mcmaster.ca) about your interest in these opportunities, and downloadable application forms or on-line application are available at: http://www.science.mcmaster.ca/~geo/graduate/app_proc.html.

Dr. Jack Rink

Associate Professor of Earth Sciences

Tel (1) 905 525-9140 x24178

Email: rinkwj@mcmaster.ca

<http://www.science.mcmaster.ca/geo/research/age/home.htm> (Rink research site)

<http://www.science.mcmaster.ca/~geo/faculty/rink/index.html> (Rink faculty homepage)

CLASSICAL ART/ARCHAEOLOGY POSITION AT CORNELL

Classical Art/Archaeology: The Department of the History of Art and Archaeology at Cornell University is looking for a scholar in classical art and archaeology, at any rank from Assistant Professor to beginning Full Professor. We seek a **Classical Art Historian** whose work engages critical and theoretical approaches to classics, archaeology, and material culture. We are especially interested in candidates with comparative work that looks at the interrelationship of the classical world in regions such as Mediterranean Europe, North Africa and/or Asia. We also welcome current field experience in excavation and/or survey. Teaching responsibilities will include both undergraduate and graduate courses in classical art and archaeology; it is essential that the candidate be able to teach an introductory course on Greek and Roman art, along with offerings to both graduate students and undergraduates in the particular area of specialization.

The Ph.D. must be completed by August 2006. Applicants should provide the following: Letter of application, curriculum vitae, copies of scholarly publications (no more than two chapters of a thesis), description of courses taught or prepared to teach, names of three references. Women and minorities are encouraged to apply. Cornell University is an Equal Opportunity Affirmative Action employer. Applications must be sent by January 1, 2006 to Classical Art and Archaeology Search Committee, Department of History of Art and Archaeology, Cornell University, Goldwin Smith Hall, Ithaca, NY 14853.

Gina Miller
Administrative Assistant
History of Art Department
GM08 Goldwin Smith Hall
Cornell University
Ithaca, NY 14853
Phone: 607-255-9861
Fax: 607-255-0566



ASSISTANT PROFESSOR POSITION,
DEPARTMENT OF ANTHROPOLOGY,
UNIVERSITY OF HAWAI‘I

ADDRESS REPLIES TO: email: mgraves@hawaii.edu

Assistant Professor (I-3) Position 83458, Department of Anthropology, University of Hawai‘i at Mānoa, College of Social Sciences, 9-month, full time, tenure-track, general funds, in Biological and Ecological Anthropology beginning fall 2006, pending availability of funds. This position will be funded 50% by the John A. Burns School of Medicine. **Duties:** The applicant must demonstrate expertise in biology and/or ecology of tropical and/or infectious diseases, have experience in (or be willing to devote significant research time to) Asia or the Pacific, and be capable to teaching introductory courses in physical anthropology as well as upper division and graduate level courses in human biology, ecology, medical anthropology. We seek an individual who is committed to an integrated anthropology program and whose research and teaching will complement and broaden our existing strengths in human biological and cultural change and adaptation, and the interaction between humans and their environments. The individual must actively seek extramural funding. Ability to contribute to College objectives, for example, interdisciplinary research and training initiatives or the Social Sciences Public Policy Center. **Minimum Qualifications:** A doctorate from an accredited university in Anthropology or a related field. Expertise in biological or ecological anthropology. Teaching experience or demonstrated teaching ability in biological/physical anthropology or human biology and medical anthropology. Evidence of scholarly presentations and/or publications. **Desirable Qualifications:** Previous research experience in Asia or the Pacific. Evidence of inter-disciplinary research. Record of or ability to generate extramurally funded research. **Pay Range:** Commensurate with qualifications and experience. **To Apply:** Send letter of application describing how you meet qualifications above, curriculum vitae, and names, addresses, and contact information for three references to: Dr. Michael W. Graves, Chair, Department of Anthropology, 2424 Maile Way, 346 Saunders Hall, University of Hawai‘i at Mānoa, Honolulu, HI 96822. Applicants may also send these materials to Graves via email: mgraves@hawaii.edu. **Closing date:** February 28, 2006. The University of Hawai‘i is an equal opportunity/affirmative action institution.

VARNA SUMMER SESSION OF AMERICAN RESEARCH CENTER IN SOFIA

The American Research Center in Sofia (www.einaudi.cornell.edu/arcs), the Varna Free University (www.vfu.bg), and the Bulgarian Heritage National Association (under the patronage of the President of Bulgaria) are sponsoring a three-week summer session on Bulgarian history and culture, with an emphasis on the ancient and Mediaeval periods. The session will consist of a week of lectures at the Varna Free University with visit to sites in and near Varna (19-25 June 2006), and 14 days of historical and cultural excursions in Bulgaria (15-18 June and 26 June-5 July 2006). Lectures and site reports will be given by leading experts from Bulgarian universities and museums, as well as by guest lecturers from US institutions.

14 JUNE, WEDNESDAY: ARRIVAL IN SOFIA.

15 JUNE, THURSDAY: VISIT OF MUSEUMS; LECTURE ON SOFIA'S HISTORY.

16 JUNE, FRIDAY: SOFIA-VELIKO TARNOVO (VIA VRATSA, NICOPOLIS AD ISTRUM, ARBANASI). ARRIVAL IN VELIKO TARNOVO.

17 JUNE, SATURDAY: VELIKO TARNOVO-VARNA (VIA RUSE AND SILISTRA). ARRIVAL IN VARNA.

18 JUNE, SUNDAY: TRIP TO ISPERIH, SBORYANOVO, SVESHTARI.

19 JUNE, MONDAY: 8 AM-NOON: LECTURES ON BULGARIAN PREHISTORY; AFTERNOON: VARNA MUSEUM.

20 JUNE, TUESDAY: 8 AM-NOON: LECTURES ON THRACE AND THE GRECO-ROMAN WORLD;

AFTERNOON: VISIT TO BALCHIK, KAVARNA, YAILATA.

21 JUNE, WEDNESDAY: 8 AM-NOON: LECTURES ON THRACE AND THE GRECO-ROMAN WORLD (CONTINUED);

AFTERNOON: VISIT OF VARNA'S LANDMARKS.

22 JUNE, THURSDAY: 8 AM-NOON: LECTURES ON BULGARIA IN THE MIDDLE AGES;

AFTERNOON: TRIP TO PLISKA AND VELIKI PRESLAV.

23 JUNE, FRIDAY: 8 AM-NOON: LECTURES ON BULGARIA IN THE MIDDLE AGES

(CONTINUED); 2-3 PM: LECTURE ON THE POST-MEDIAEVAL HISTORY OF BULGARIA.

24 JUNE, SATURDAY: VARNA-MALKO TARNOVO (VIA DEBELT, NESEBAR, AND SOZOPOL).

25 JUNE, SUNDAY: MALKO TARNOVO-KARDZHALI.

26 JUNE, MONDAY: KARDZHALI-PERPERIKON-ZLATOGRAD.

27 JUNE, TUESDAY: ZLATOGRAD-SMOLIAN.

28 JUNE, WEDNESDAY: SMOLIAN-PLOVDIV-HISAR.

29 JUNE, THURSDAY: HISAR-STAROSEL-KAZANLAK.

30 JUNE, FRIDAY: KAZANLAK-KOPRIVSHTITSA.

1 JULY, SATURDAY: KOPRIVSHTITSA-BLAGOEVGRAD.

2 JULY, SUNDAY: BLAGOEVGRAD-SOFIA (VIA RILA MONASTERY).

3 JULY, MONDAY: VISIT OF SOFIA'S LANDMARKS.

4 JULY, TUESDAY: FREE PROGRAM; DINNER AT ARCS.

5 JULY, WEDNESDAY: DEPARTURE.

The program is open to graduate and advanced undergraduate students, high-school and college teachers, and other scholars with a serious interest in Bulgarian history and culture. The total cost for participation not including international travel is \$1,320 (full room and board, use of research facilities, local travel, and lectures). Applications may be obtained from Professor Kevin Clinton (120 Goldwin Smith Hall, Classics Department, Cornell University, Ithaca, NY 14853, kmc1@cornell.edu), and should be returned postmarked no later than 15 February 2006. A limited number of grants to cover part of the participation fees will be available to the student applicants, to be awarded on the basis of their application and demonstration of need. The approved participants will receive a notification by 15 March 2006. The participation fee and a photocopy of a valid medical insurance card will be due by 15 April. Information about Bulgarian sites is available at many internet locations; we suggest as a starting point: <http://www.visitbulgaria.com>, <http://get.info.bg/visit>, <http://www.picturesofbulgaria.com>.

ΑΝΑΚΟΙΝΩΣΕΙΣ - ANNOUNCEMENTS

AMERICAN RESEARCH CENTER IN SOFIA

It is a pleasure to report that the groundwork has been laid for operating an American Research Center in Sofia, which will be similar in purpose to American research centers in many other countries, such as ARIT, ASOR, ASCSA, etc. ARCS has been established as a non-profit organization dedicated to facilitating academic research in Bulgaria and collaboration between scholars from North America and former communist countries in Southeast Europe (Albania, Bulgaria, Macedonia, Romania, The Union of Serbia and Montenegro). The main focus of the Center will be research in the humanities and social sciences (in the fields of anthropology, archaeology, art history, epigraphy, history, philology, among others), from prehistoric antiquity to the modern period.

This effort started approximately three years ago, and has made considerable progress to date:

We are a not-for-profit corporation registered in NY State, a non-profit foundation registered in Bulgaria, and exempt from US Federal income tax under section 501 (c)(3) of the Internal Revenue Code (all contributions are tax-deductible).

We will soon have temporary quarters in Sofia and we will begin operations in the spring of 2006.

OUR FIRST PROGRAM WILL BE A SUMMER SESSION IN COLLABORATION WITH VARNA UNIVERSITY. A detailed announcement will follow in a subsequent message.

We have our own website, at Cornell's Mario Einaudi Center for International Studies: <http://www.einaudi.cornell.edu/arcs/>. You will find there our logo (designed after a coin of Serdica issued in the reign of Lucius Verus) and the updated description of the project. The description contains much more information about our work to date. Cornell has agreed to be host institution. We have an initial board of trustees, consisting of seven members.

We are now forming a consortium of member institutions in North America, in order to qualify for membership in the Council of American Overseas Research Centers (CAORC) and be eligible to apply for federal funds. These institutions will be the charter members. The trustees have set a fee of \$200 for annual membership. They have been considering a managing committee, consisting of representatives of member institutions, rather like that of the American School of Classical Studies at Athens, but before coming to a final decision on its structure they would like to hear the views of the charter members. The current members are the following:

MEMBER INSTITUTIONS

College of William and Mary
Franklin and Marshall College
Duke University

Cornell University
Bryn Mawr College
University of Illinois, Urbana-Champaign
Virginia Tech
Harvard University
Rice University
The Johns Hopkins University
University of North Carolina at Asheville
Vassar College
Stanford University

Members in process:
University of North Carolina at Chapel Hill
Rutgers University
University of South Florida
Gettysburg College
Austin Peay State University
New York University
University of Toronto
Emory University
University of California, Berkeley
Brown University

If your department (or institution) wishes to become a charter member, the chair (or higher administrative officer) should write a brief letter to that effect and send it to me with the membership fee of \$200. The fee for the second year will be due a year after we start actual operations.

I will be happy to answer any questions you may have.

Kevin Clinton	Director of Graduate Studies
Professor	Archaeology Program
Department of Classics	Cornell University
Goldwin Smith 120	
Cornell University	Acting President
Ithaca, NY 14853	American Research Center in Sofia
Tel: 607-255-8325	http://www.einaudi.cornell.edu/arcs/
Fax: 607-254-8899	

INTERNET SITES

MAGIC IN ANCIENT EGYPT ON TAC

Friends and colleagues: The influence of the supernatural often is overlooked or underestimated by 21st-Century archaeological interpretations. In the case of ancient Egypt, the key role of supernatural power as exemplified by magic is highlighted by Magic in Ancient Egypt: Sacred Things and Secret Places, the latest video feature on our nonprofit streaming-media Web site, The Archaeology Channel (<http://www.archaeologychannel.org>).

As expressed in monuments that retain their impact still today, magic and the supernatural filled the lives of ancient Egyptians. In this made-for-TAC video, television personality Fred Lewis and Field Museum Egyptologist Thomas Mudloff visit sacred and secret sites of ancient Egypt and reveal the mystery and magic of temples, pyramids, and tombs. They highlight the secrets of ancient magic, some still practiced today. Viewers will see the tomb of the god Osiris, the entrance to the underworld, and secret tunnels under the floor, and experience the magic of the stones themselves.

This and other programs are available on TAC for your use and enjoyment. We urge you to support this public service by participating in our Membership (<http://www.archaeologychannel.org/member.html>) and Underwriting (<http://www.archaeologychannel.org/sponsor.shtml>) programs. Only with your help can we continue and enhance this nonprofit public-education and visitor-supported service. We also welcome new content partners as we reach out to the world community.

Please forward this message to others who may be interested and let us know if you wish to be removed from our mailing list.

Richard M. Pettigrew, Ph.D., RPA
President and Executive Director
Archaeological Legacy Institute
<http://www.archaeologychannel.org>

GUIDE FOR ARCHAEOLOGY @ ABOUT.COM, STRATIFIED SAMPLES, 12-01-05

Sureyya's Journey

<http://archaeology.about.com/od/careerstories/a/sureyya1.htm?nl=1>

22-year-old I.T. sysop Sureyya Kose has decided to change careers from Information Technology to Archaeology. In this first report, Sureyya describes how she discovered what she wanted to do. Part of an extensive collection of materials in Careers in Archaeology.

Ode to Thee, Sweet Bucket Auger

http://archaeology.about.com/od/poetry/a/bucket_auger.htm

Archaeology sometimes requires digging deep holes in river valley sediments, performed by archaeologists with a bucket auger, a screen and a pit partner. After a while, the bucket auger is all you can think of, and so, one late November day, with all the fondness and revulsion of the best kind, I wrote this poem to my rickety bucket auger.

The Question of the Week is: What kind of real-life career choices do I have with a degree in archaeology?

http://archaeology.about.com/od/questionoftheweek/qt/career_query.htm?nl=1

Archeology v Archaeology

<http://archaeology.about.com/b/a/222914.htm>

I cracked open a can of worms (yum!) when I off-handedly wrote a piece on whether people like to spell the name of our field. In response to a reader comment, I put up a little poll. So far, archaeology has a substantial lead. Vote early and often, and see how the majority rules in this deeply scientific poll, with results certified by no one at all.

Top Books in Rock Art (North America)

<http://archaeology.about.com/od/booksonrockart/tp/rockart.htm>

Some news stories making the rounds: German archaeologist Susanne Osthoff kidnapped in Baghdad

<http://archaeology.about.com/b/a/223323.htm>

Geochronological dates on the Puebla footprints reported by Silvia Gonzalez last summer are in and shockingly ancient:

<http://archaeology.about.com/b/a/223318.htm>

Jobs Listed in About Indeed Since 11/21 (I'm going to do this on a weekly basis in the future):

<http://archaeology.about.com/b/a/222450.htm>

Archaeologist, Salt Lake City

Field Tech, Austin Texas

Field Tech, San Francisco

Archaeologist, Metairie, Louisiana
Project manager, Kenai, Alaska
Mid- to Sr-Level Archaeologist, Sacramento CA
Research Associate, Denver
Archaeologist, Minneapolis
Archaeologist, Phoenix
Archaeologist, Metairie, Louisiana
Archaeologist, New Orleans, Louisiana
Archaeologist, Vernal, Utah
Associate Publisher, Archaeology magazine
Archaeologist, Salt Lake City, Utah

STRATIFIED SAMPLES, 12-07-05

Unknown Empires

http://archaeology.about.com/od/ancientcivilizations/tp/unknown_civ.htm?nl=1

Everyone knows of some ancient civilizations, either from World History classes in school, from books or films, or from television specials on the Discovery Channel, the BBC or Public Broadcasting. Ancient Rome, Ancient Greece, Ancient Egypt, all of these are covered again and again in our books, magazines, and television shows. But there are so many interesting, less well-known civilizations! Here's an admittedly biased selection of some of them and why they are not to be forgotten.

Samhain Sunrise

<http://archaeology.about.com/b/a/223524.htm?nl=1>

Photographs from Knowth.com at the Megalithic passage tomb of Tara in Ireland were taken at the Samhain, the cross quarter of the astronomical year, half way between the autumnal equinox and the winter solstice. Who knew? I could have thrown a party. But the sunrise at Samhain makes for some great photos taken early in November this year.

Solstice Celebrations

<http://archaeology.about.com/od/ancientcivilizations/a/solstice.htm>

Celebrating the Solstice, when winter brings us the shortest day of the year, is something we as humans do all over the planet. Here's a selection of how we all party when the days grow short, both modern and ancient civilizations.

Arrowheads v Projectile Points

<http://archaeology.about.com/od/tooltypes/a/arrowheads.htm?nl=1>

Arrowheads are the most identifiable archaeological artifact in the world. Whether they've personally collected them from nearby farmlands, seen them in museum displays or just watched them being shot into people in John Wayne movies, most people know the triangular tips of arrow shafts are the remnants of a hunting trip.

The Cache at Deir el-Bahri

http://archaeology.about.com/od/archaeologicalsites/a/deir_el_bahri.htm

Queen Hatshepsut's Deir el-Bahri (also spelled Deir el Bahari) is one of the most beautiful temples in Egypt, built by the architects of Queen Hatshepsut, a pharaoh of the New Kingdom of Ancient Egypt. But Deir el Bahri's sublime beauty hid one of the

secrets of the New Kingdom--a large cache of royal mummies placed there 500 years after Hatshepsut's death in an attempt by her descendants to protect their leaders' remains from vandals.

The Narmer Palette

<http://archaeology.about.com/od/nterms/g/narmer.htm>

The Narmer Palette is an early Period Egyptian civilization artifact, showing the conquest of Upper and Lower Egypt by the first Egyptian pharaoh, Menes or Narmer. An important part of the relatively mysterious and unknown bits of Ancient Egypt called the Early and Predynastic period.

STRATIFIED SAMPLES, 12-14-05

Homo Erectus Colonization of Europe

<http://archaeology.about.com/od/homoerectus/a/pakefield.htm>

Geoarchaeologists working on the coast of the North Sea of Britain near the town of Pakefield in Suffolk, England have discovered artifacts suggesting that Homo erectus arrived in what is now the UK over 200,000 years earlier than previously thought.

Forgotten Empire

<http://archaeology.about.com/od/persianempire/fr/curtis05.htm?nl=1>

The new book *Forgotten Empire: The world of Ancient Persia*, edited by John Curtis and Nigel Tallis, combines a detailed introduction to the Persian Empire with a lavishly illustrated catalog of artifacts and architecture. It is an excellent introduction to the Achmaenid dynasties of the Persian Empire, its color images and text together providing a rich and tasty textured revelation of this long-lost and little-known civilization of the past.

Sureyya's Journey, Part II

<http://archaeology.about.com/od/careerstories/a/sureyya2.htm>

22-year old Sureyya Kose has decided to chuck her career as an IT sysop for the exciting world of archaeology. In this second posting in the series *Sureyya's Journey*, Sureyya discovers that the library is the best place to start to catch up on the reading required for an archaeology degree. Part of the extensive collection of resources for gaining a Career in Archaeology.

Question of the Week:

After one civilization conquers another's land, why did they often rebuild in the same exact place, over the top of the ruins of the previous buildings?

http://archaeology.about.com/od/questionoftheweek/qt/buried_sites2.htm

Please feel free to pass it along...

K. Kris Hirst

About Archaeology

<http://archaeology.about.com>

www.About.com

About.com is part of The New York Times Company

ΝΕΕΣ ΕΚΔΟΣΕΙΣ – NEW PUBLICATIONS

ANCIENT STARCH RESEARCH

Left Coast Press, Inc. is pleased to announce publication of ANCIENT STARCH RESEARCH, edited by Robin Torrence and Huw Barton. This 256 page, large format publication with over 200 illustrations, was compiled by two dozen archaeologists and is the first volume to address the use of starch molecules in archaeological research.

Numerous new studies are using starch discovered in archaeological contexts to improve our knowledge of past human behavior and environmental variation. Given the substantial body of successful research, the time has clearly come for a comprehensive description of ancient starch research and its potential for archaeologists. This book fills these roles by describing the fundamental principles underlying starch research, guiding researchers through the methodology, reviewing the results of significant case studies, and pointing the way to future avenues for research.

Contributors to this volume come from five continents and include Jenny Atchison, Maria del Pilar Balbot, Jane Balme, Huw Barton, Wendy Beck, Rebecca Conway, Alison Crowther, Judith Field, Richard Fullagar, Beth Gott, Michael Haslam, Mark Horrocks, Lisa Kealhofer, M. Alexandra Korstantje, Carol Lentfer, Tom Loy, Tracey Lu, Peter Matthews, James F. O'Connell, Jeff Parr, Gail Robertson, Delwen Samuel, Linda Scott Cummings, Michael Therin, Robin Torrence, Donald Ugent, Bonnie Williamson, and Richard Wright.

Coeditor Robin Torrence is a Principal Research Scientist in the Department of Anthropology, Australian Museum, Sydney. She is author or editor of seven books and almost 100 articles on archaeological science. She served as Treasurer of the World Archaeological Congress and was recipient of the Society for American Archaeology's 2002 Excellence in Archaeological Analysis Award. Coeditor Huw Barton has the Wellcome Trust University Award in Bioarchaeology, School of Archaeology and Ancient History, University of Leicester. He has a Ph.D. from University of Sydney and has done fieldwork in Australia and Southeast Asia.

The Publisher, Left Coast Press, Inc., is a new scholarly and professional publisher of archaeology, anthropology, and related disciplines, launched in 2005 by Mitch Allen, who founded and ran AltaMira Press. Six Left Coast books were published in 2005, including volumes by Tom King, Brian Fagan, and David Whitley. The Press is distributed in the US by University of Arizona Press, in Canada by University of British Columbia Press, and in the rest of the world by Berg Publishers. More information on the press is available at www.LCoastPress.com.

ANCIENT STARCH RESEARCH is available in a cloth edition for \$69.95 by phone at 800 426-3797 or by email at orders@uapress.arizona.edu. ISBN 1-59874-018-0.